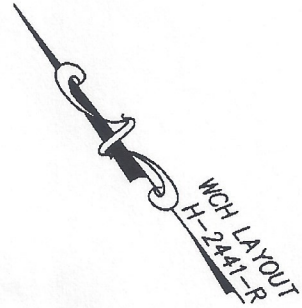


SUB-PHASE 2C COMMON ELEMENT

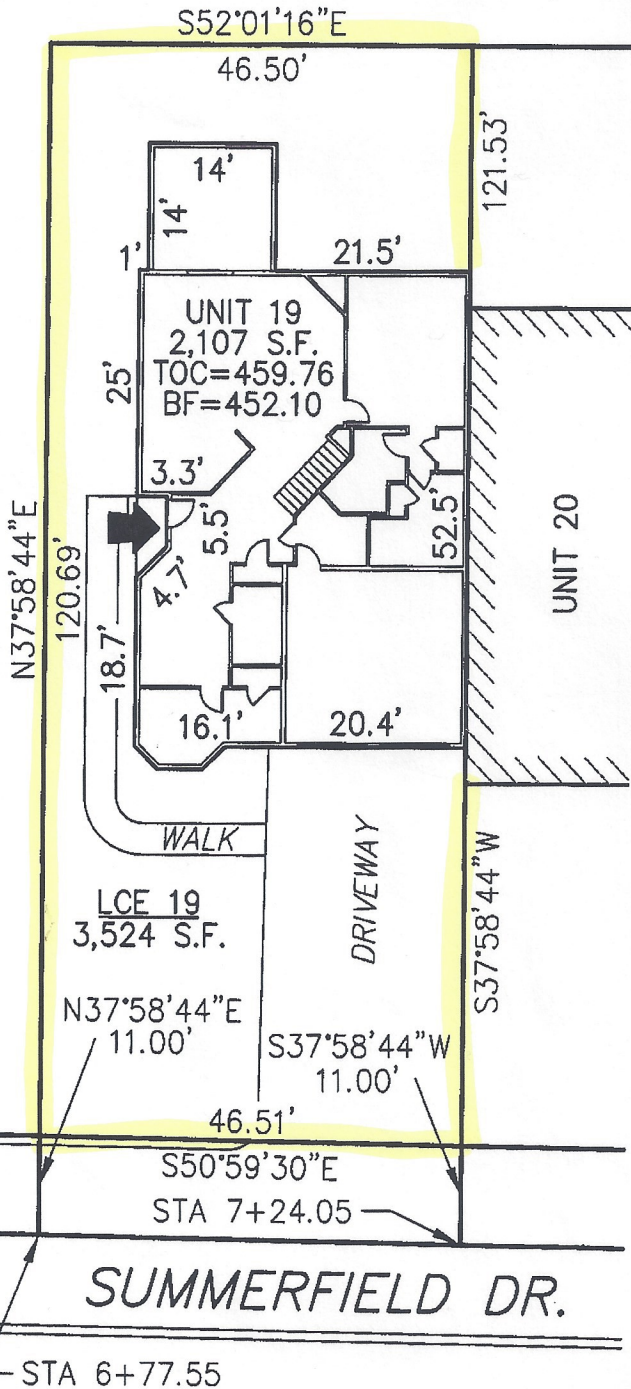
DECLARATION LEGEND

SUB-PHASE 2C

LCE 19 = 3,524 S.F.
COMMON ELEMENT = 53,222± S.F.

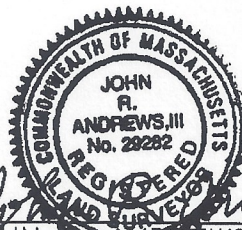


SUB-PHASE 2C COMMON ELEMENT



PLAN REFERENCE:
PLAN BOOK , PLAN

I CERTIFY THAT THIS PLAN SHOWS THE UNIT BEING CONVEYED AND OF IMMEDIATE ADJOINING UNITS, AND THAT IT FULLY AND ACCURATELY DEPICTS THE LAYOUT, LOCATION, DIMENSIONS, APPROXIMATE AREA, UNIT NUMBER, MAIN ENTRANCE, AND IMMEDIATE COMMON AREA TO WHICH IT HAS ACCESS, AS BUILT.



John R. Andrews, III
JOHN R. ANDREWS, III, P.L.S. DATE 9/20/06

SUMMERFIELD AT TAFT HILL CONDOMINIUM - SUB-PHASE 2C
SUMMERFIELD DRIVE, UXBRIDGE, MA

DOVER UNIT PLAN - UNIT 19 SUMMERFIELD DR.

Andrews Survey & Engineering, Inc.
Land Surveying Civil Engineering Site Planning
ASE
P.O. Box 223, 104 Mendon Street
Uxbridge, Massachusetts 01569-0312
P: 508-278-3897 F: 508-278-2289

REVISIONS:	SCALE: 1"=20'	DATE: 9-20-06
	DRAWN BY: TRB	CHK'D BY: AF
36 Summerfield	JOB: 2004-439	FILE: phase2C

ATTEST: WORG: Anthony J. Vigliotti, Register