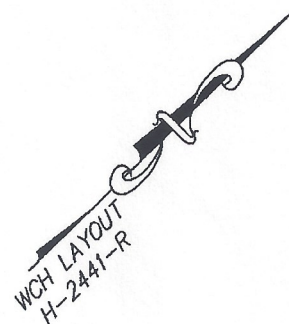


**DECLARATION LEGEND**

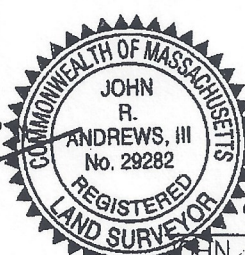
**SUB-PHASE 2E**

LCE 31 = 3,686 S.F.  
COMMON ELEMENT = 84,320± S.F.

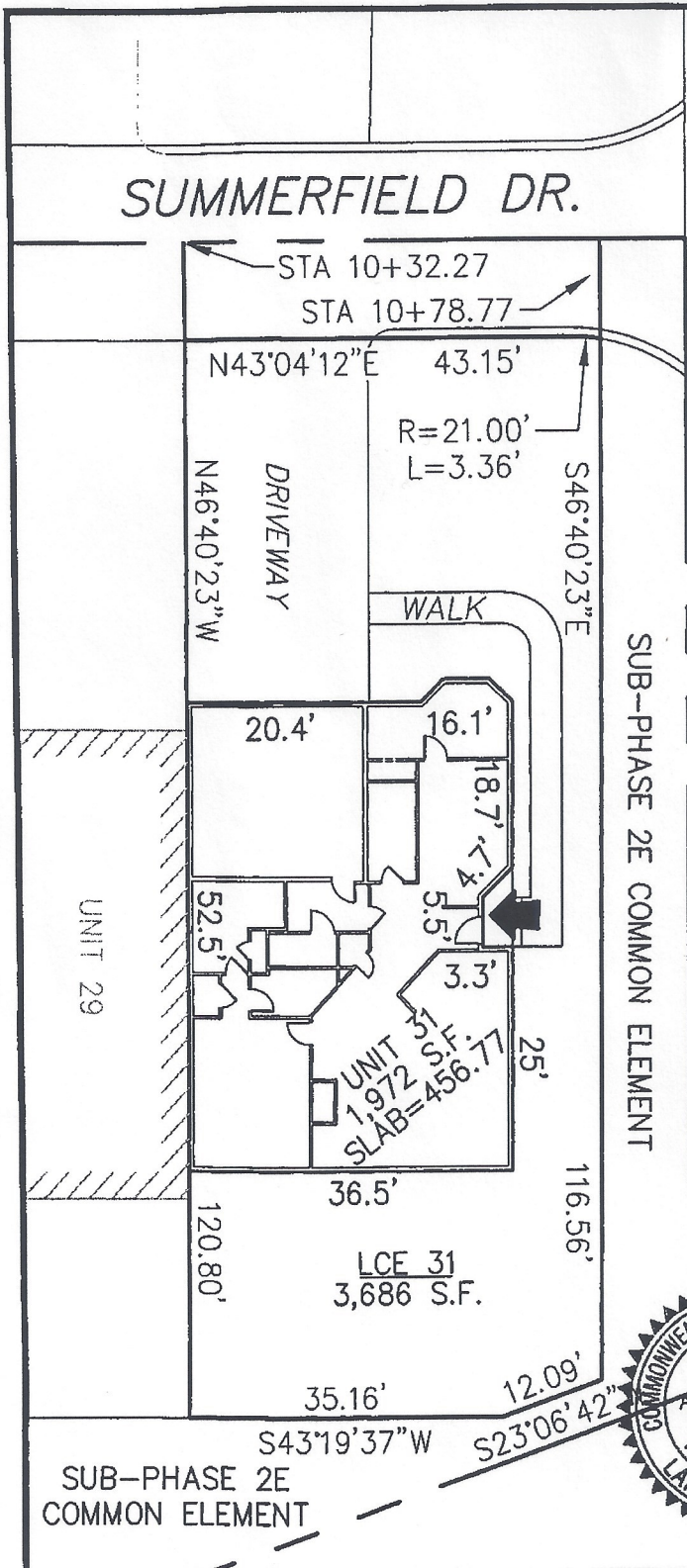


PLAN REFERENCE:  
PLAN BOOK \_\_\_\_\_, PLAN \_\_\_\_\_

I CERTIFY THAT THIS PLAN SHOWS THE UNIT BEING CONVEYED AND OF IMMEDIATE ADJOINING UNITS, AND THAT IT FULLY AND ACCURATELY DEPICTS THE LAYOUT, LOCATION, DIMENSIONS, APPROXIMATE AREA, UNIT NUMBER, MAIN ENTRANCE, AND IMMEDIATE COMMON AREA TO WHICH IT HAS ACCESS, AS BUILT.



*John R. Andrews* 10/15/10  
JOHN R. ANDREWS, III, P.L.S. DATE



**SUMMERFIELD AT TAFT HILL CONDOMINIUM - SUB-PHASE 2E  
SUMMERFIELD DRIVE, UXBRIDGE, MA**

**DOVER UNIT PLAN - UNIT 31 SUMMERFIELD DR.**

**Andrews Survey & Engineering, Inc.**  
Land Surveying Civil Engineering Site Planning  
**ASPE**  
P.O. Box 512, 104 Mendon Street  
Uxbridge, Massachusetts 01569-0312  
P: 508-278-3897 F: 508-278-2289

REVISIONS:	SCALE: 1"=20'	DATE: 10/13/10
	DRAWN BY: TRB	CHK'D BY: JRA
<i>55 Summerfield</i>	JOB: 2004-439	FILE: PHASE 2E_rev(8)

ATTEST: WORC. Anthony J. Vigliotti, Register