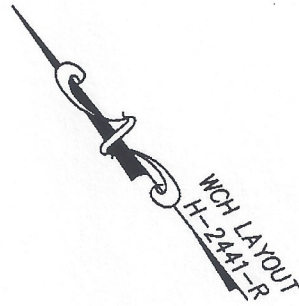
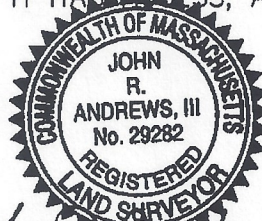


**DECLARATION LEGEND**  
**SUB-PHASE 2E**  
 LCE 18 = 3,372 S.F.  
 COMMON ELEMENT = 128,430± S.F.

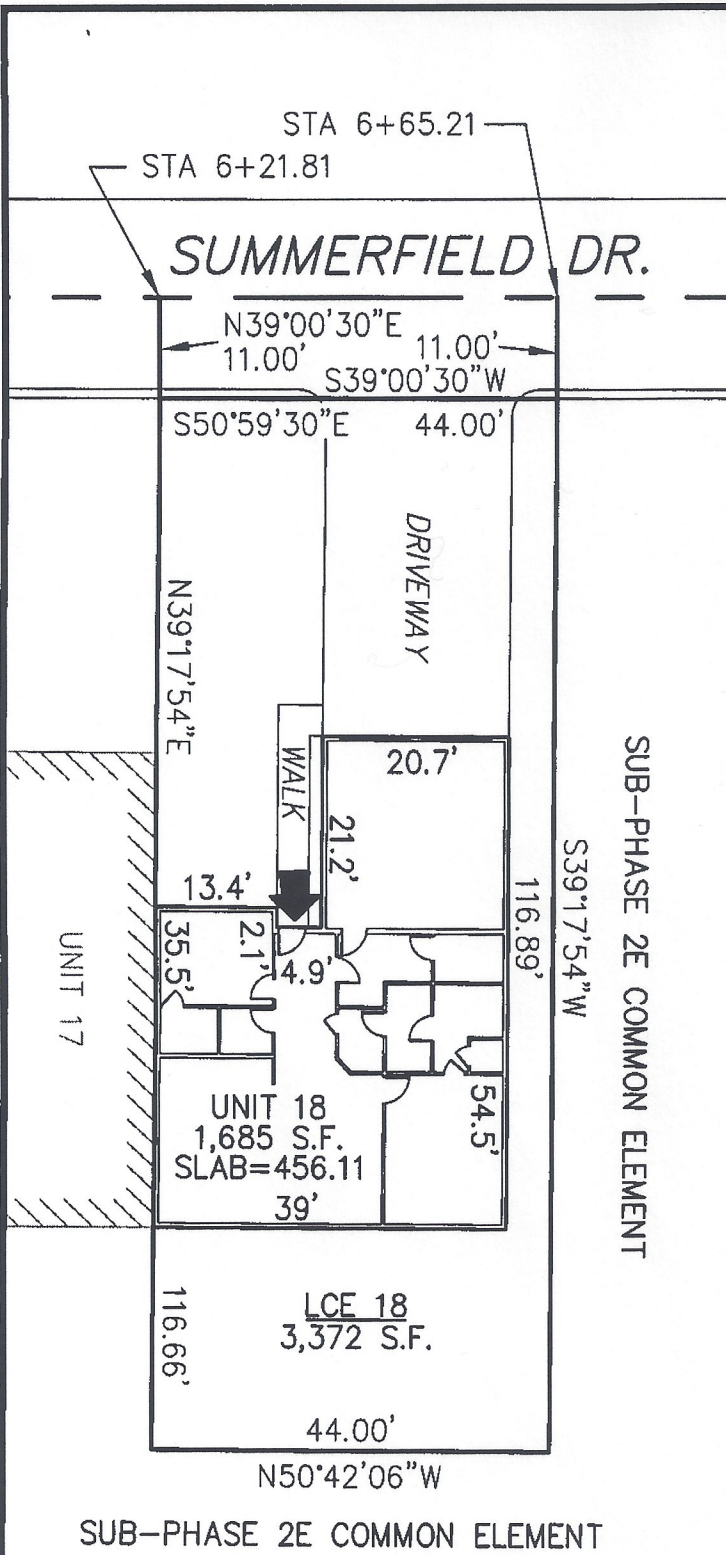


PLAN REFERENCE:  
 PLAN BOOK \_\_\_\_\_, PLAN \_\_\_\_\_

I CERTIFY THAT THIS PLAN SHOWS THE UNIT BEING CONVEYED AND OF IMMEDIATE ADJOINING UNITS, AND THAT IT FULLY AND ACCURATELY DEPICTS THE LAYOUT, LOCATION, DIMENSIONS, APPROXIMATE AREA, UNIT NUMBER, MAIN ENTRANCE, AND IMMEDIATE COMMON AREA TO WHICH IT HAS ACCESS, AS BUILT.



*John R. Andrews III* 6/25/08  
 JOHN R. ANDREWS, III, P.L.S. /DATE



**SUMMERFIELD AT TAFT HILL CONDOMINIUM - SUB-PHASE 2E**  
**SUMMERFIELD DRIVE, UXBRIDGE, MA**

**COTTAGE UNIT PLAN - UNIT 18 SUMMERFIELD DR.**

|                       |               |                       |
|-----------------------|---------------|-----------------------|
| REVISIONS:            | SCALE: 1"=20' | DATE: 6/24/08         |
|                       | DRAWN BY: TRB | CHK'D BY: JRA         |
| <i>35 Summerfield</i> | JOB: 2004-439 | FILE: PHASE 2E_rev(3) |

**Andrews Survey & Engineering, Inc.**  
 Land Surveying Civil Engineering Site Planning

**ASE**

P.O. Box 712, 104 Mendon Street  
 Uxbridge, Massachusetts 01569-0712  
 P: 508-278-3897 F: 508-278-2289