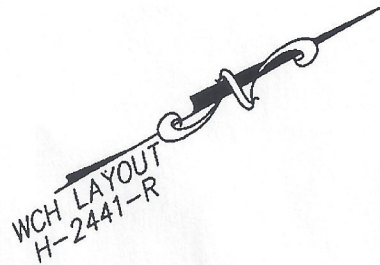


DECLARATION LEGEND

SUB-PHASE 2B

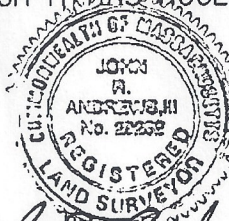
LCE 1 = 3,300 S.F.

COMMON ELEMENT = 18,585± S.F.



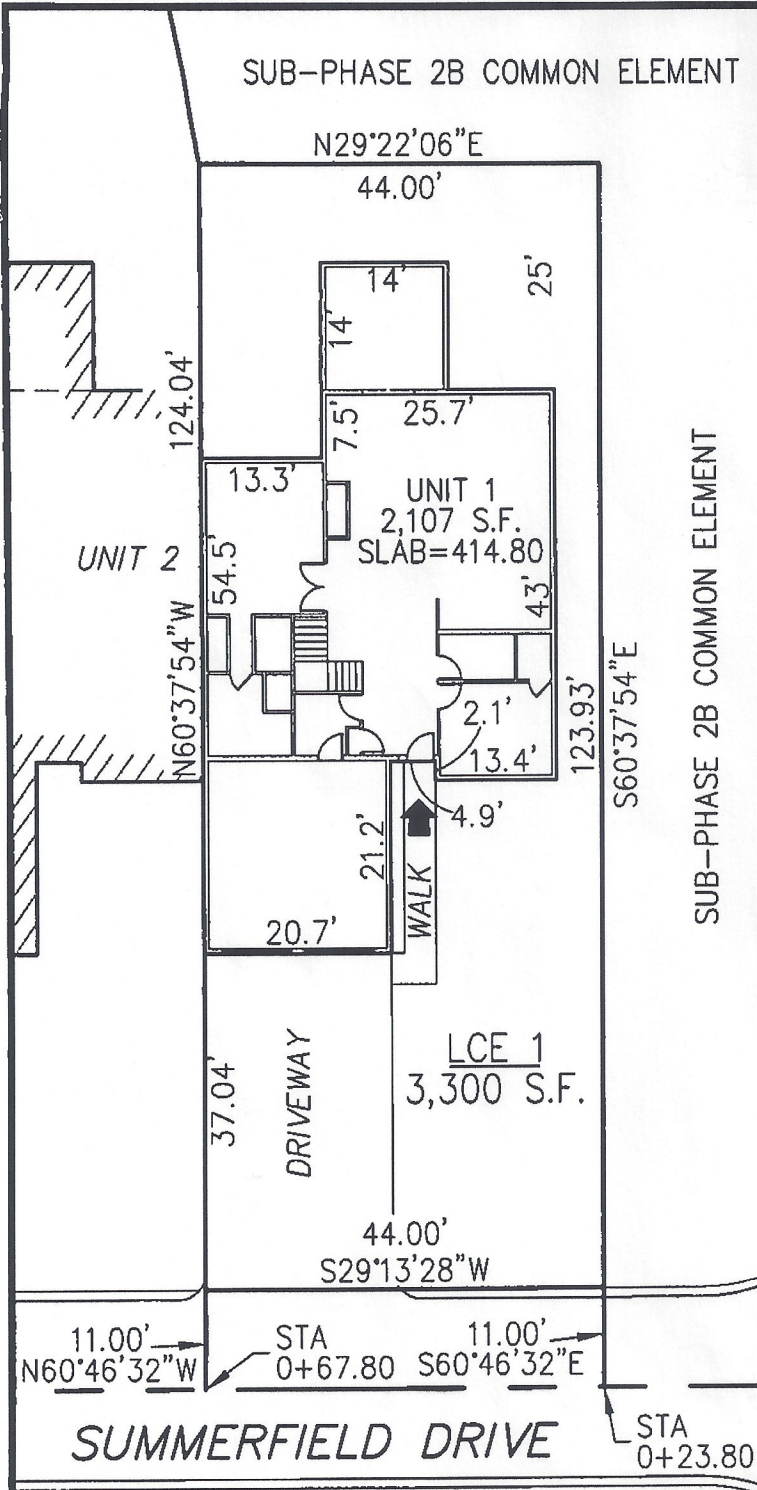
PLAN REFERENCE:
PLAN BOOK , PLAN

I CERTIFY THAT THIS PLAN SHOWS THE UNIT BEING CONVEYED AND OF IMMEDIATE ADJOINING UNITS, AND THAT IT FULLY AND ACCURATELY DEPICTS THE LAYOUT, LOCATION, DIMENSIONS, APPROXIMATE AREA, UNIT NUMBER, MAIN ENTRANCE, AND IMMEDIATE COMMON AREA TO WHICH IT HAS ACCESS, AS BUILT.



John R. Andrews
JOHN R. ANDREWS, III, P.L.S.

5/10/06
DATE



**SUMMERFIELD AT TAFT HILL CONDOMINIUM - SUB-PHASE 2B
SUMMERFIELD DRIVE, UXBRIDGE, MA**

VILLAGE UNIT PLAN - UNIT 1 SUMMERFIELD DR.

Andrews Survey & Engineering, Inc.
Land Surveying Civil Engineering Site Planning

P.O. Box 312, 104 Mendon Street
Uxbridge, Massachusetts 01569-0312
P: 508-278-3897 F: 508-278-2289

REVISIONS:	SCALE: 1"=20'	DATE: 8-4-06
8/10/06 - CORRECTED UNIT NUMBER	DRAWN BY: SJO	CHK'D BY: JRA
5 Summerfield Drive	JOB: 2004-439	FILE: phase2B

ATTEST: WORC. Anthony J. Vignotti, Register