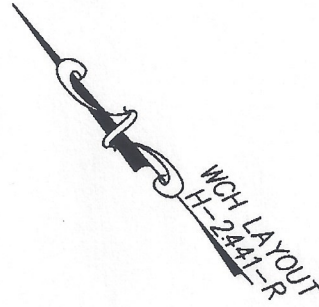


DECLARATION LEGEND

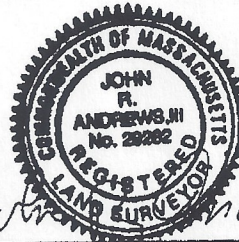
SUB-PHASE 2A

LCE 12 = 3,878 S.F.
COMMON ELEMENT = 77,172± S.F.

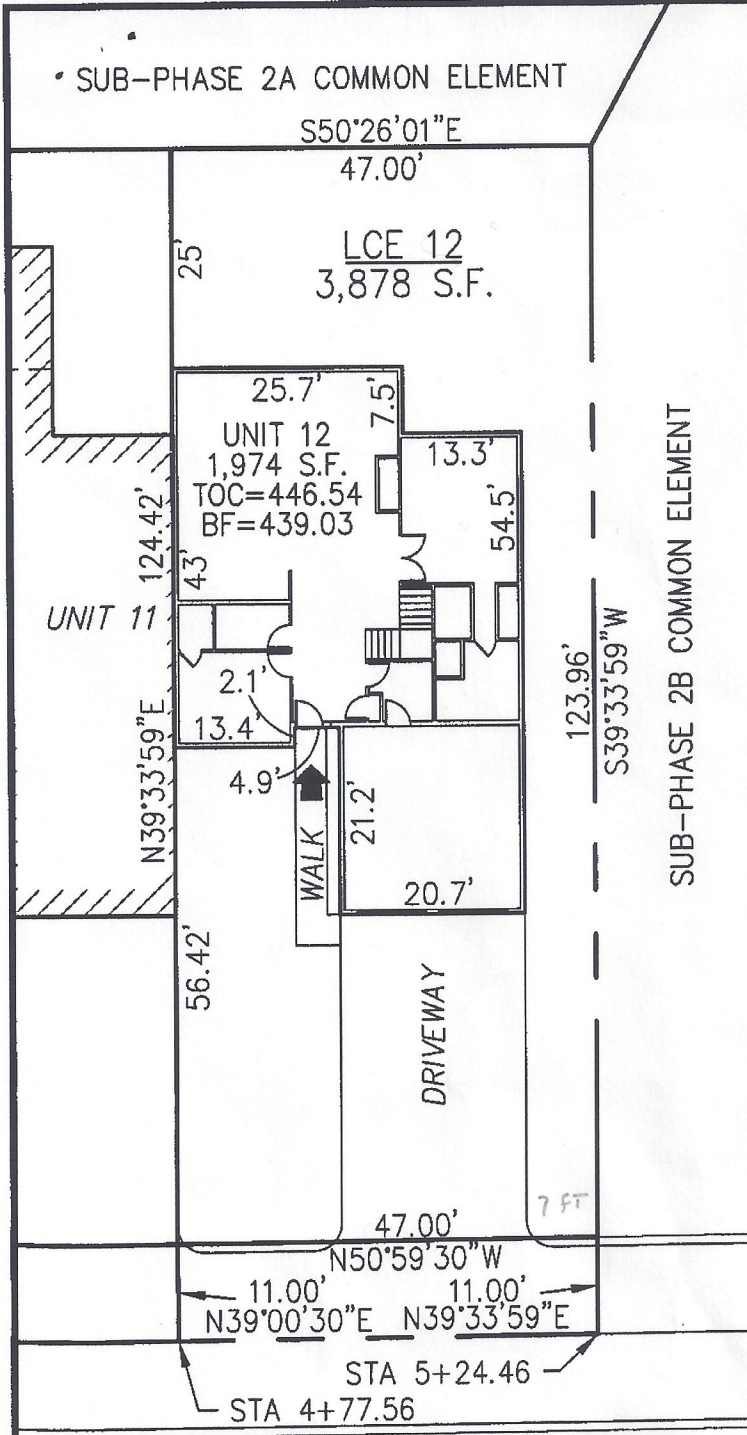


PLAN REFERENCE:
PLAN BOOK 843, PLAN 12

I CERTIFY THAT THIS PLAN SHOWS THE UNIT BEING CONVEYED AND OF IMMEDIATE ADJOINING UNITS, AND THAT IT FULLY AND ACCURATELY DEPICTS THE LAYOUT, LOCATION, DIMENSIONS, APPROXIMATE AREA, UNIT NUMBER, MAIN ENTRANCE, AND IMMEDIATE COMMON AREA TO WHICH IT HAS ACCESS, AS BUILT.



John R. Andrews, III 4/13/06
JOHN R. ANDREWS, III, P.L.S. DATE



SUMMERFIELD DRIVE

**SUMMERFIELD AT TAFT HILL CONDOMINIUM - SUB-PHASE 2A
SUMMERFIELD DRIVE, UXBRIDGE, MA**

VILLAGE UNIT PLAN - UNIT 12 SUMMERFIELD DR.

Andrews Survey & Engineering, Inc.
Land Surveying & Civil Engineering / Site Planning

REVISIONS:	SCALE: 1"=20'	DATE: 5-22-06
	DRAWN BY: SJO	CHK'D BY: JRA
<i>20 Summerfield</i>	JOB: 2004-439	FILE: phase2A

ASF
Post Box 22, 101 Mendon Street
Uxbridge, Massachusetts 01569-0312
P: 508-278-3997 F: 508-278-2289

ATTEST: WORC. Anthony J. Vigliotti, Register