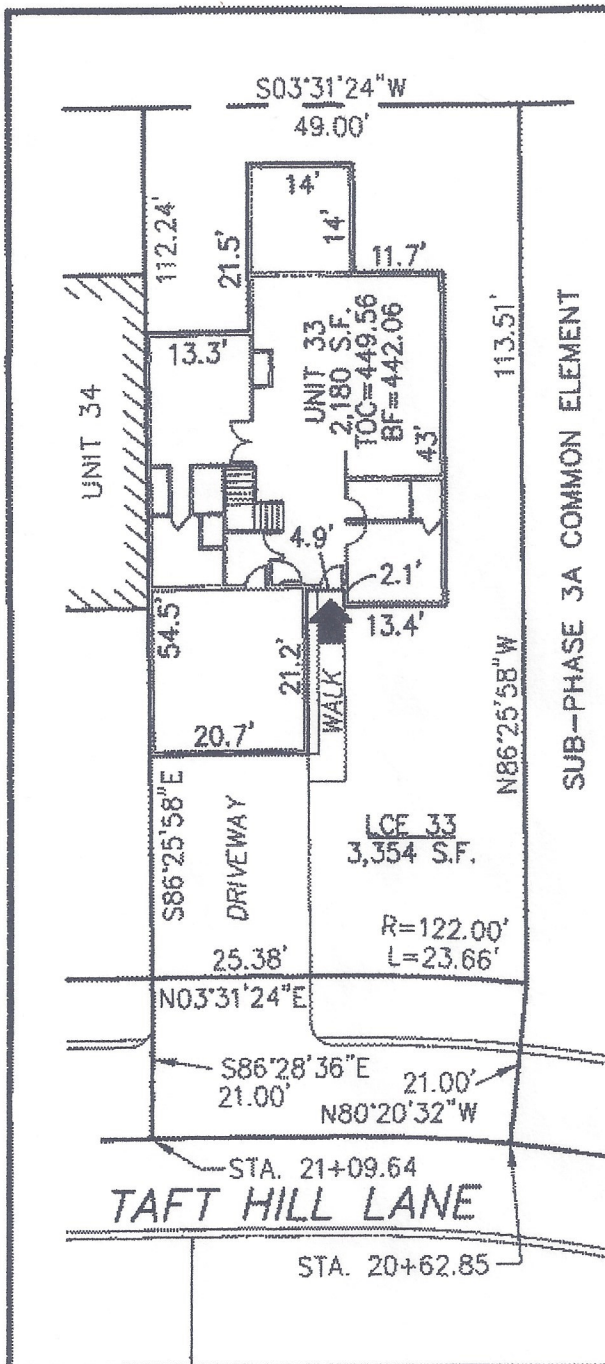




Bk: 47293 Pg: 399



DECLARATION LEGEND
 SUB-PHASE 3A
 LCE 33 = 3,354 S.F.
 COMMON ELEMENT = 48,364± S.F.



PLAN REFERENCE:
 PLAN BOOK 888, PLAN 16

I CERTIFY THAT THIS PLAN SHOWS THE UNIT BEING CONVEYED AND OF IMMEDIATE ADJOINING UNITS, AND THAT IT FULLY AND ACCURATELY DEPICTS THE LAYOUT, LOCATION, DIMENSIONS, APPROXIMATE AREA, UNIT NUMBER, MAIN ENTRANCE, AND IMMEDIATE COMMON AREA TO WHICH IT HAS ACCESS AS BUILT.



John R. Andrews, III 4/11/11
 JOHN R. ANDREWS, III, P.L.S. DATE

**SUMMERFIELD AT TAFT HILL CONDOMINIUM - SUB-PHASE 3A
 TAFT HILL LANE, UXBRIDGE, MA**

VILLAGE UNIT PLAN - UNIT 33 TAFT HILL LANE			Andrews Survey & Engineering, Inc. Land Surveying, Civil Engineering, Site Planning P.O. Box 312, 104 Mendon Street Uxbridge, Massachusetts 01569-0312 P: 508-278-3897 F: 508-278-2289
REVISIONS:	SCALE: 1"=20'	DATE: 3-28-11	
	DRAWN BY: TRB	CHK'D BY: JRA	
105 THL	JOB: 2004-439	FILE: phase3A_revised(3)	