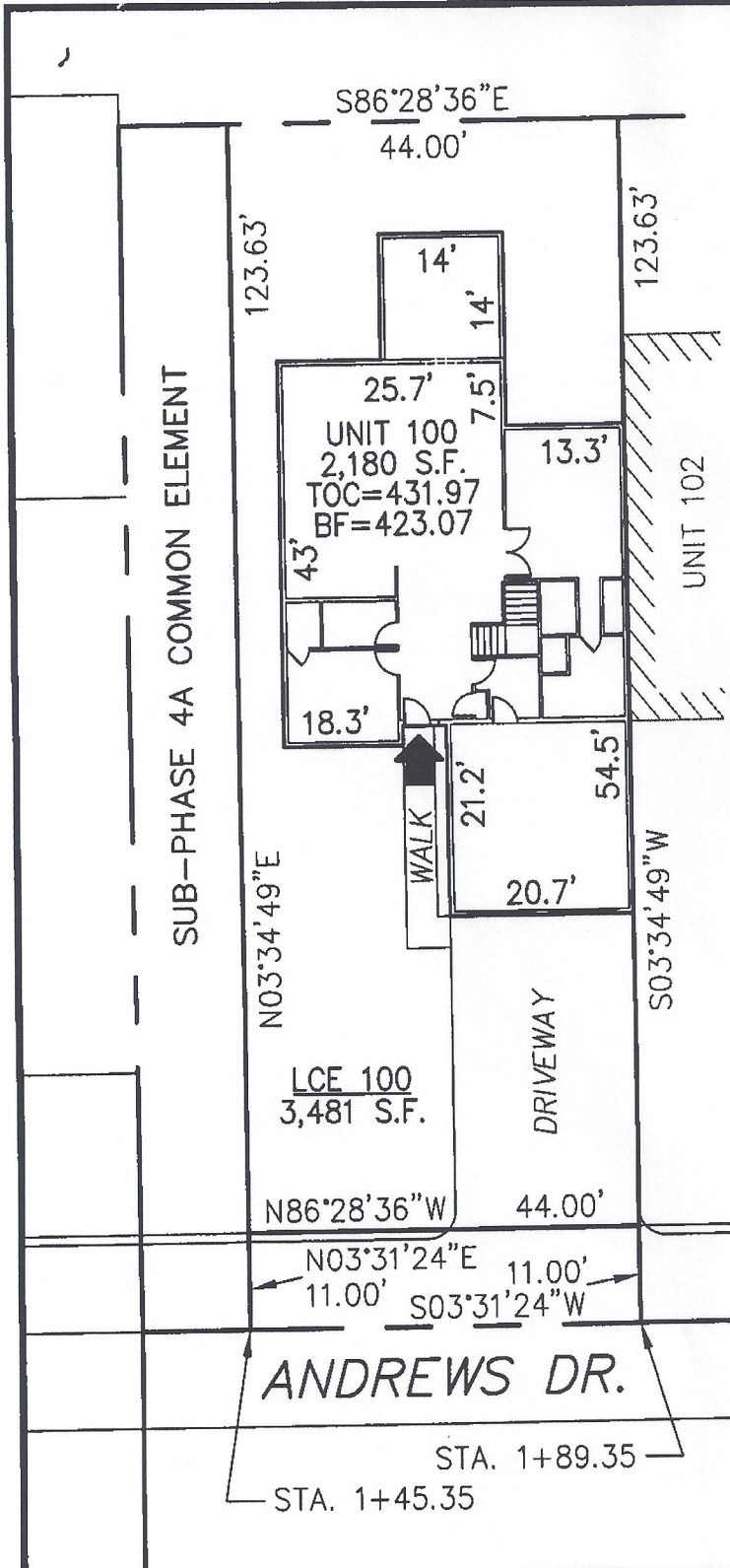


**DECLARATION LEGEND**

**SUB-PHASE 4A**

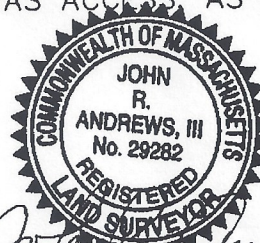
LCE 100 = 3,481 S.F.

COMMON ELEMENT = 12,091± S.F.



PLAN REFERENCE:  
PLAN BOOK \_\_\_\_\_, PLAN \_\_\_\_\_

I CERTIFY THAT THIS PLAN SHOWS THE UNIT BEING CONVEYED AND OF IMMEDIATE ADJOINING UNITS, AND THAT IT FULLY AND ACCURATELY DEPICTS THE LAYOUT, LOCATION, DIMENSIONS, APPROXIMATE AREA, UNIT NUMBER, MAIN ENTRANCE, AND IMMEDIATE COMMON AREA TO WHICH IT HAS ACCESS, AS BUILT.



*John R. Andrews* 8/12/08  
JOHN R. ANDREWS, III, P.L.S. DATE

**SUMMERFIELD AT TAFT HILL CONDOMINIUM - SUB-PHASE 4A  
ANDREWS DRIVE, UXBRIDGE, MA**

**VILLAGE UNIT PLAN - UNIT 100 ANDREWS DRIVE**

Andrews Survey & Engineering, Inc.  
Land Surveying, Civil Engineering, Site Planning

REVISIONS:	SCALE: 1"=20'	8/7/08
	DRAWN BY: TRB	CHK'D BY: JRA
10 Andrews Drive	JOB: 2004-439	FILE: phase4A_revised

**ASE**  
P.O. Box 22, 104 Mendon Street  
Uxbridge, Massachusetts 01569-0312  
P: 508-278-3897 F: 508-278-2289

ATTEST: WORC. Anthony J. Vigliotti, Register