

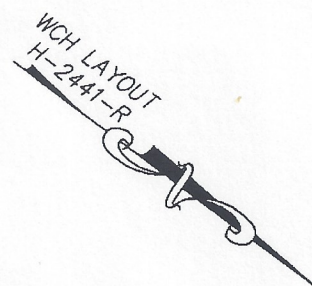
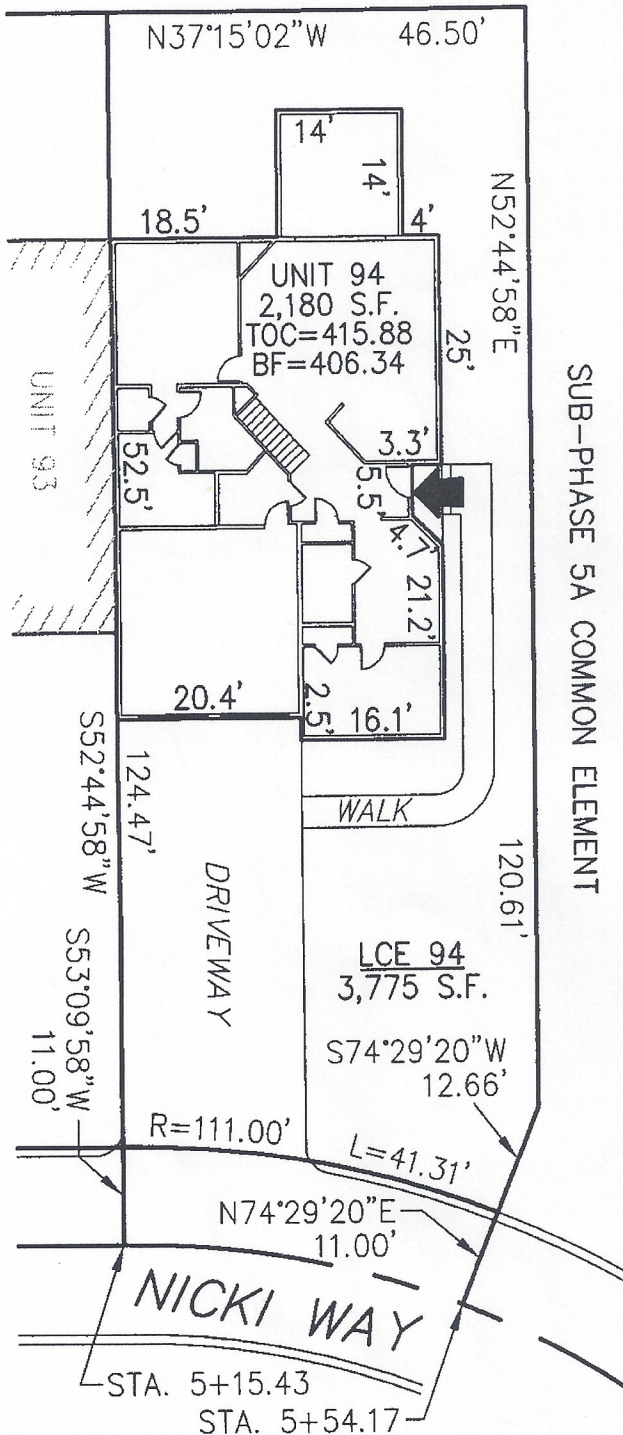
SUB-PHASE 5A
COMMON ELEMENT

DECLARATION LEGEND

SUB-PHASE 5A

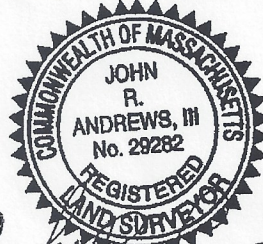
LCE 94 = 3,775 S.F.

COMMON ELEMENT = 120,663± S.F.



PLAN REFERENCE:
PLAN BOOK , PLAN

I CERTIFY THAT THIS PLAN SHOWS THE UNIT BEING CONVEYED AND OF IMMEDIATE ADJOINING UNITS, AND THAT IT FULLY AND ACCURATELY DEPICTS THE LAYOUT, LOCATION, DIMENSIONS, APPROXIMATE AREA, UNIT NUMBER, MAIN ENTRANCE, AND IMMEDIATE COMMON AREA TO WHICH IT HAS ACCESS, AS BUILT.



John R. Andrews, III

SUMMERFIELD AT TAFT HILL CONDOMINIUM - SUB-PHASE 5A
NICKI WAY, UXBRIDGE, MA

DOVER UNIT PLAN - UNIT 94 NICKI WAY

Andrews Survey & Engineering, Inc.
Land Surveying Civil Engineering Site Planning

REVISIONS:

SCALE: 1"=20'

DATE: 5/9/12

DRAWN BY: TRB

CHK'D BY: JRA

JOB: 2004-439

FILE: PHASE5A.dwg

Pro. Box 112, 104 Mendon Street
Uxbridge, Massachusetts 01569-0312
P: 508-278-3897 F: 508-278-2289

28 Nicki Way

ATTEST: WORC. Anthony J. Vigliotti, Register