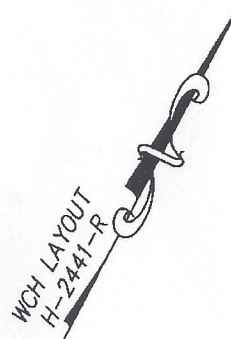


**DECLARATION LEGEND**

SUB-PHASE 4E

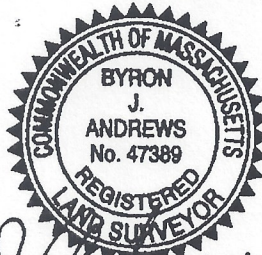
LCE 127 = 3,408 S.F.

COMMON ELEMENT = 36,994± S.F.

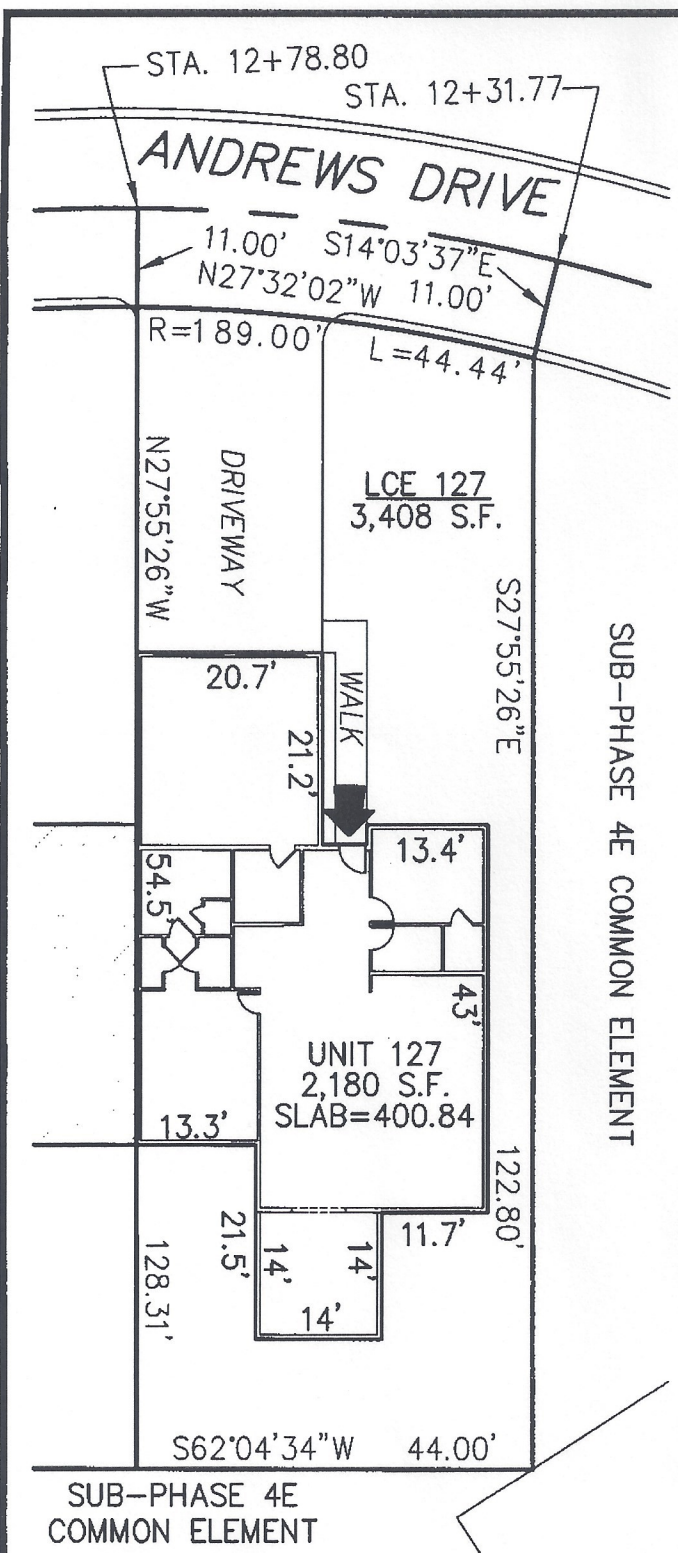


PLAN REFERENCE:  
PLAN BOOK \_\_\_\_\_, PLAN \_\_\_\_\_

I CERTIFY THAT THIS PLAN SHOWS THE UNIT BEING CONVEYED AND OF IMMEDIATE ADJOINING UNITS, AND THAT IT FULLY AND ACCURATELY DEPICTS THE LAYOUT, LOCATION, DIMENSIONS, APPROXIMATE AREA, UNIT NUMBER, MAIN ENTRANCE, AND IMMEDIATE COMMON AREA TO WHICH IT HAS ACCESS, AS BUILT.



*Byron J. Andrews* 10/2/13



**SUMMERFIELD AT TAFT HILL CONDOMINIUM - SUB-PHASE 4E  
ANDREWS DRIVE, UXBRIDGE, MA**

**VILLAGE UNIT PLAN - UNIT 127 ANDREWS DR.**

REVISIONS:	SCALE: 1"=20'	DATE: 10/8/13
	DRAWN BY: TRB	CHK'D BY: JRA
64 Andrews	JOB: 2004-439	FILE: PHASE4E_REV.dwg

**Andrews Survey & Engineering, Inc.**  
Land Surveying - Civil Engineering - Site Planning

P.O. Box 312, 104 Mendon Street  
Uxbridge, Massachusetts 01569-0312  
P: 508-278-3897 F: 508-278-2289

ATTEST: WORC. Anthony J. Vigliotti, Register