

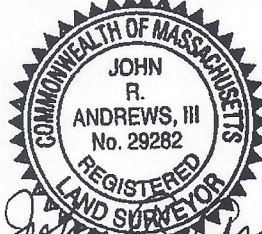
**DECLARATION LEGEND**  
**SUB-PHASE 3B**  
 LCE 49 = 4,928 S.F.  
 COMMON ELEMENT = 56,185± S.F.

WCH LAYOUT  
 H-2441-R

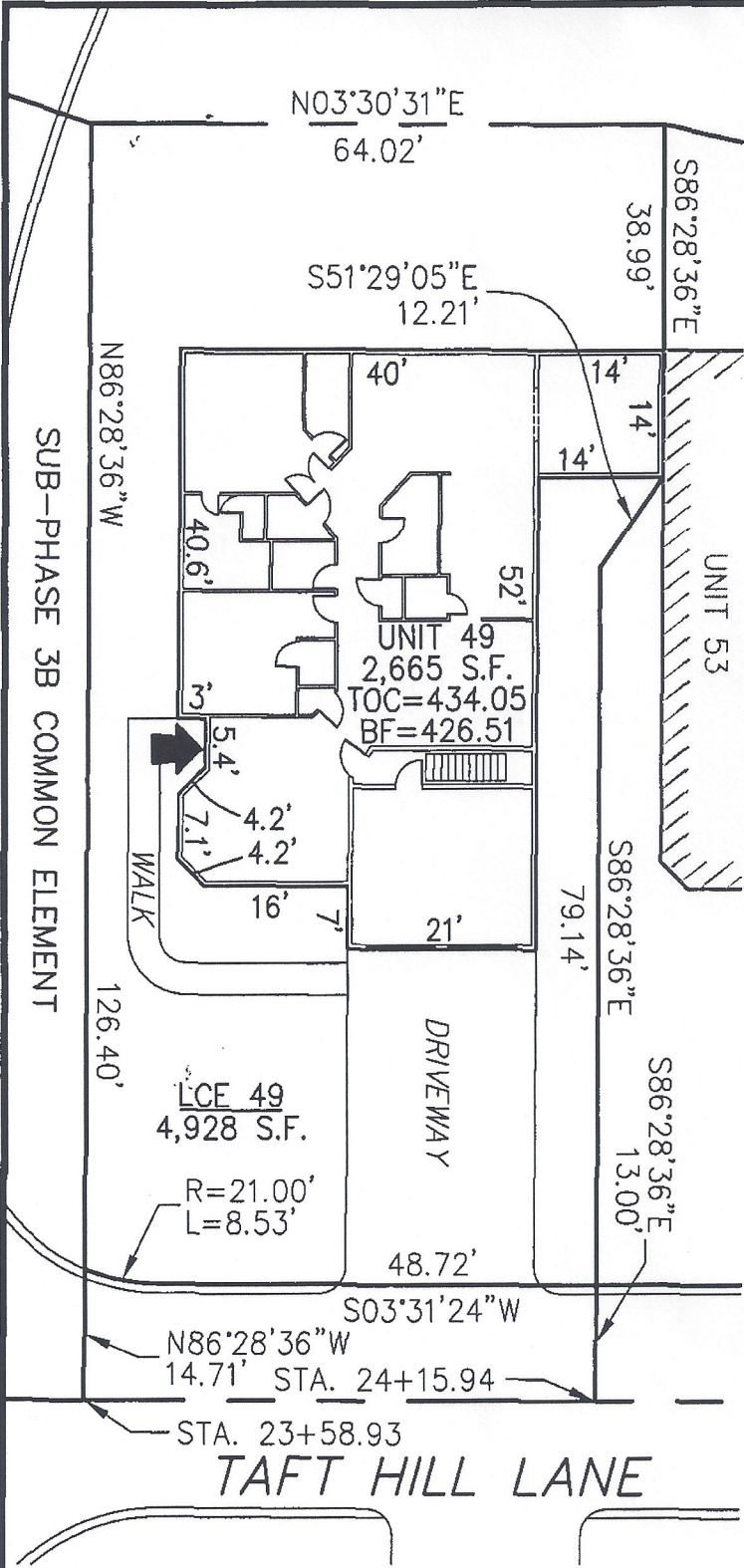


PLAN REFERENCE:  
 PLAN BOOK , PLAN

I CERTIFY THAT THIS PLAN SHOWS THE UNIT BEING CONVEYED AND OF IMMEDIATE ADJOINING UNITS, AND THAT IT FULLY AND ACCURATELY DEPICTS THE LAYOUT, LOCATION, DIMENSIONS, APPROXIMATE AREA, UNIT NUMBER, MAIN ENTRANCE, AND IMMEDIATE COMMON AREA TO WHICH IT HAS ACCESS, AS BUILT.



*John R. Andrews, III* 9/18/08  
 JOHN R. ANDREWS, III, P.L.S. DATE



**SUMMERFIELD AT TAFT HILL CONDOMINIUM - SUB-PHASE 3B**  
**TAFT HILL LANE, UXBRIDGE, MA**

<b>FAIRWAY UNIT PLAN - UNIT 49 TAFT HILL LANE</b>		
REVISIONS:	SCALE: 1"=20'	DATE: 9-15-08
	DRAWN BY: TRB	CHK'D BY: JRA
<i>102 Taft Hill Lane</i>	JOB: 2004-439	FILE: PHASE3B

**Andrews Survey & Engineering, Inc.**  
 Land Surveying • Civil Engineering • Site Planning  
  
 P.O. Box 312, 104 Mendon Street  
 Uxbridge, Massachusetts 01569-0312  
 P: 508-278-3897 F: 508-278-2289

ATTEST: WORC. Anthony J. Vigliotti, Register