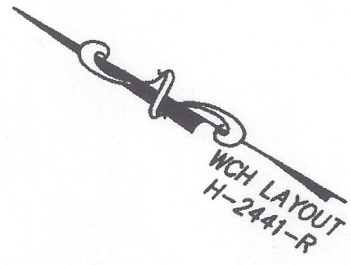
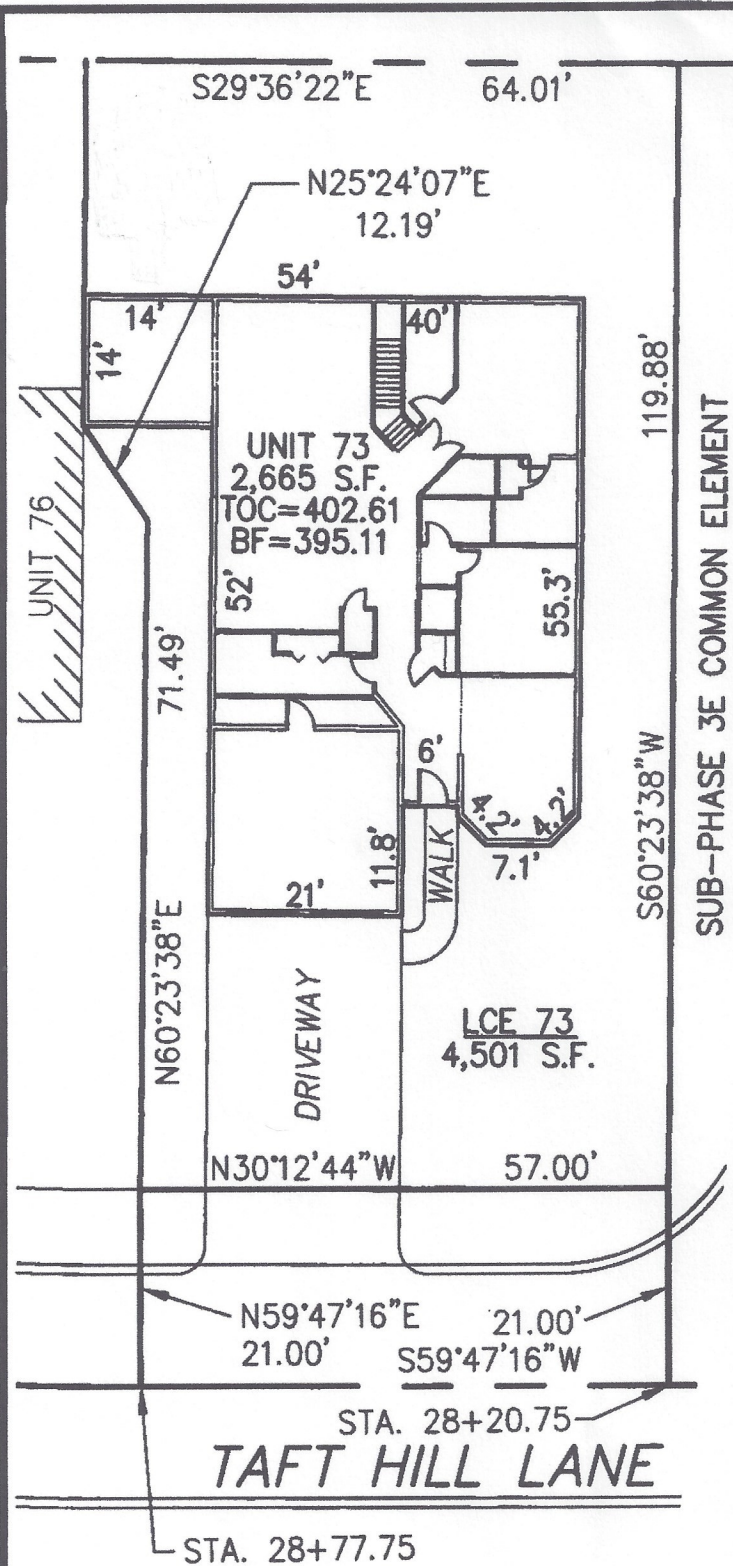


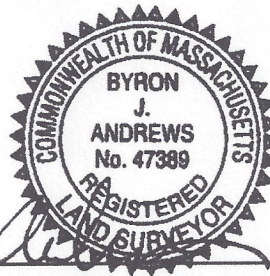
DECLARATION LEGEND

SUB-PHASE 3E
 LCE 73 = 4,501 S.F.
 COMMON ELEMENT = 5,088± S.F.



PLAN REFERENCE:
 PLAN BOOK , PLAN

I CERTIFY THAT THIS PLAN SHOWS THE UNIT BEING CONVEYED AND OF IMMEDIATE ADJOINING UNITS, AND THAT IT FULLY AND ACCURATELY DEPICTS THE LAYOUT, LOCATION, DIMENSIONS, APPROXIMATE AREA, UNIT NUMBER, MAIN ENTRANCE, AND IMMEDIATE COMMON AREA TO WHICH IT HAS ACCESS, AS BUILT.



Byron J. Andrews 7/1/15

**SUMMERFIELD AT TAFT HILL CONDOMINIUM - SUB-PHASE 3E
 TAFT HILL LANE, UXBRIDGE, MA**

FAIRWAY UNIT PLAN - UNIT 73 TAFT HILL LANE

Andrews Survey & Engineering, Inc.
 Land Surveying • Civil Engineering • Site Planning

ASPE
 P.O. Box 312, 314 Mendon Street
 Uxbridge, Massachusetts 01569-0312
 P: 508-278-3897 F: 508-278-2289

REVISIONS:	SCALE: 1"=20'	DATE: 6/29/15
	DRAWN BY: TRB	CHK'D BY: JRA
145 THL	JOB: 2004-439	FILE: PHASE3E.dwg

ATTEST: WORC. Anthony J. Vigliotti, Register 145744