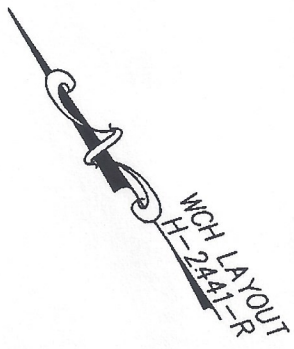
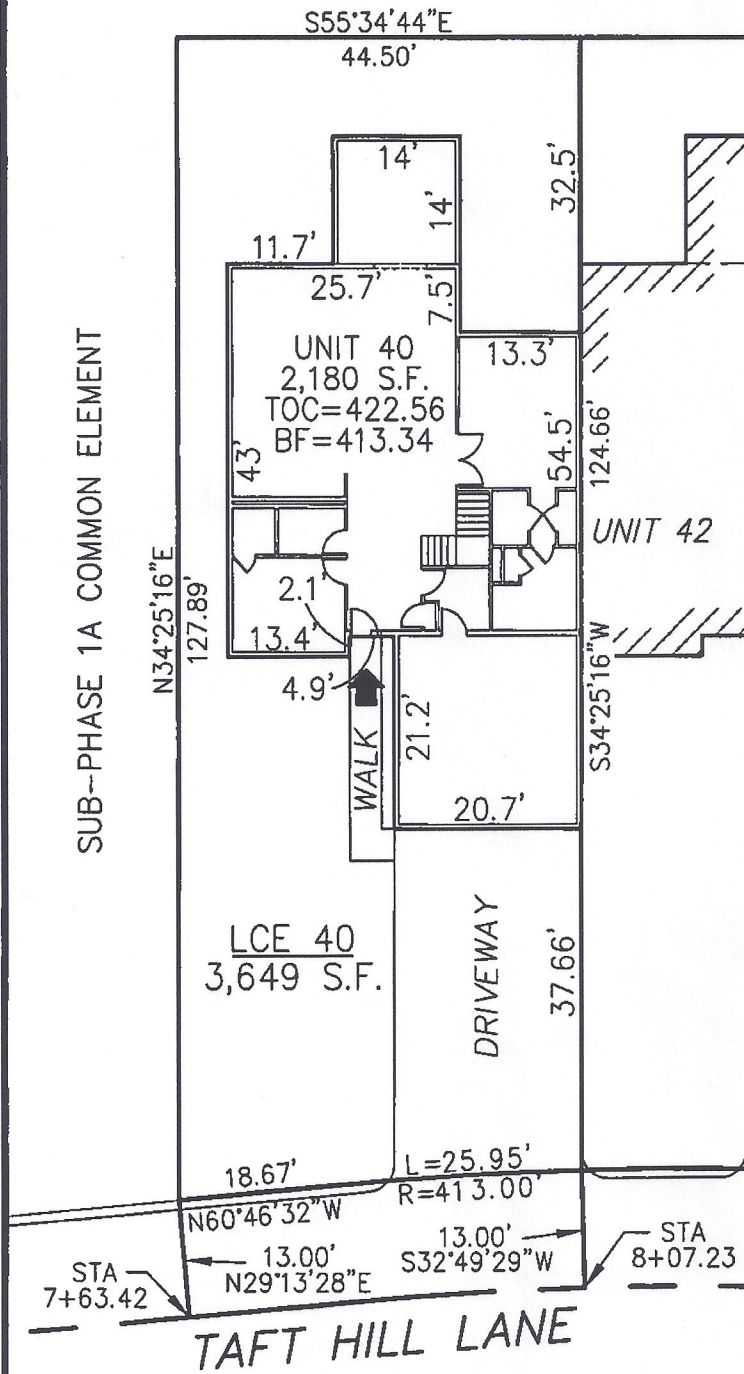


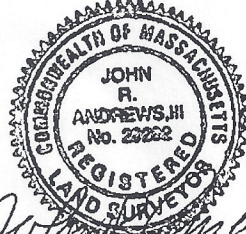
SUB-PHASE 1A COMMON ELEMENT

DECLARATION LEGEND
SUB-PHASE 1A
 LCE 40 = 3,649 S.F.
 COMMON ELEMENT = 336,037± S.F.



PLAN REFERENCE:
 PLAN BOOK , PLAN

I CERTIFY THAT THIS PLAN SHOWS THE UNIT BEING CONVEYED AND OF IMMEDIATE ADJOINING UNITS, AND THAT IT FULLY AND ACCURATELY DEPICTS THE LAYOUT, LOCATION, DIMENSIONS, APPROXIMATE AREA, UNIT NUMBER, MAIN ENTRANCE, AND IMMEDIATE COMMON AREA TO WHICH IT HAS ACCESS, AS BUILT.



John R. Andrews, III
 JOHN R. ANDREWS, III, P.L.S. 7/6/06 DATE

**SUMMERFIELD AT TAFT HILL CONDOMINIUM - SUB-PHASE 1A
 DOUGLAS STREET, UXBRIDGE, MA**

VILLAGE UNIT PLAN - 40 TAFT HILL LANE

Andrews Survey & Engineering, Inc.
 Land Surveying • Civil Engineering • Site Planning
 P.O. Box 312, 104 Mendon Street
 Uxbridge, Massachusetts 01569-0312
 P: 508-278-3897 • F: 508-278-2289

REVISIONS:	SCALE: 1"=20'	DATE: 7-3-06
	DRAWN BY: SJO	CHK'D BY: JRA
40 Taft Hill Lane	JOB: 2004-439	FILE: phase1A_rev

ATTEST: WORC. Anthony J. Vignelli, Register