

SUB-PHASE 1C COMMON ELEMENT

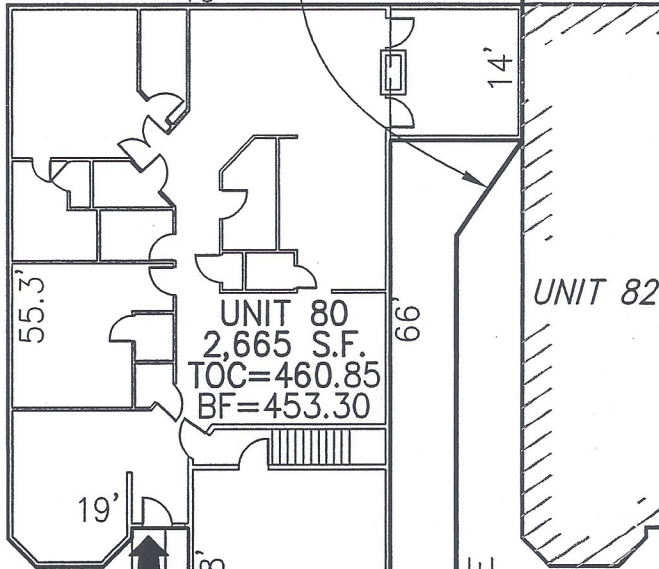
N78°44'22"E

56.85'

8.71'  
N43°10'54"E

12.14'  
S23°31'24"W

25'  
S11°15'38"E



UNIT 80  
2,665 S.F.  
TOC=460.85  
BF=453.30

UNIT 82

LCE 80  
5,027 S.F.

RADIAL  
13.00'  
N08°34'08"E

DRIVEWAY

L=58.29'  
R=187.00'

13.00'  
S09°17'32"E

TAFT HILL LANE

STA 15+59.54

STA 16+21.89

DECLARATION LEGEND

SUB-PHASE 1C

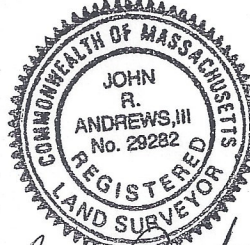
LCE 80 = 5,027 S.F.

COMMON ELEMENT = 47,608± S.F.

WCH LAYOUT  
H-2441-R

PLAN REFERENCE:  
PLAN BOOK , PLAN

I CERTIFY THAT THIS PLAN SHOWS THE UNIT BEING CONVEYED AND OF IMMEDIATE ADJOINING UNITS, AND THAT IT FULLY AND ACCURATELY DEPICTS THE LAYOUT, LOCATION, DIMENSIONS, APPROXIMATE AREA, UNIT NUMBER, MAIN ENTRANCE, AND IMMEDIATE COMMON AREA TO WHICH IT HAS ACCESS, AS BUILT.



*John R. Andrews* 4/5/06  
JOHN R. ANDREWS, III, P.L.S. DATE

SUMMERFIELD AT TAFT HILL CONDOMINIUM - SUB-PHASE 1C  
TAFT HILL LANE, UXBRIDGE, MA

FAIRWAY UNIT PLAN - 80 TAFT HILL LANE

REVISIONS:	SCALE: 1'=20'	DATE: 1-9-06
1. 2/14/06 - ADDED INTERIOR WALLS	DRAWN BY: SJO	CHK'D BY: JRA
80 Taft Hill Lane	JOB: 2004-439	FILE: phase1C

Andrews Survey & Engineering, Inc.  
Land Surveying Civil Engineering Site Planning  
**ASE**  
P.O. Box 312, 104 Mendon Street  
Uxbridge, Massachusetts 01569-0312  
P: 508-278-3897 F: 508-278-2289