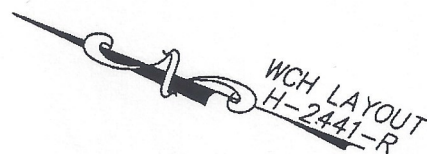


SUB-PHASE 1B COMMON ELEMENT

DECLARATION LEGEND

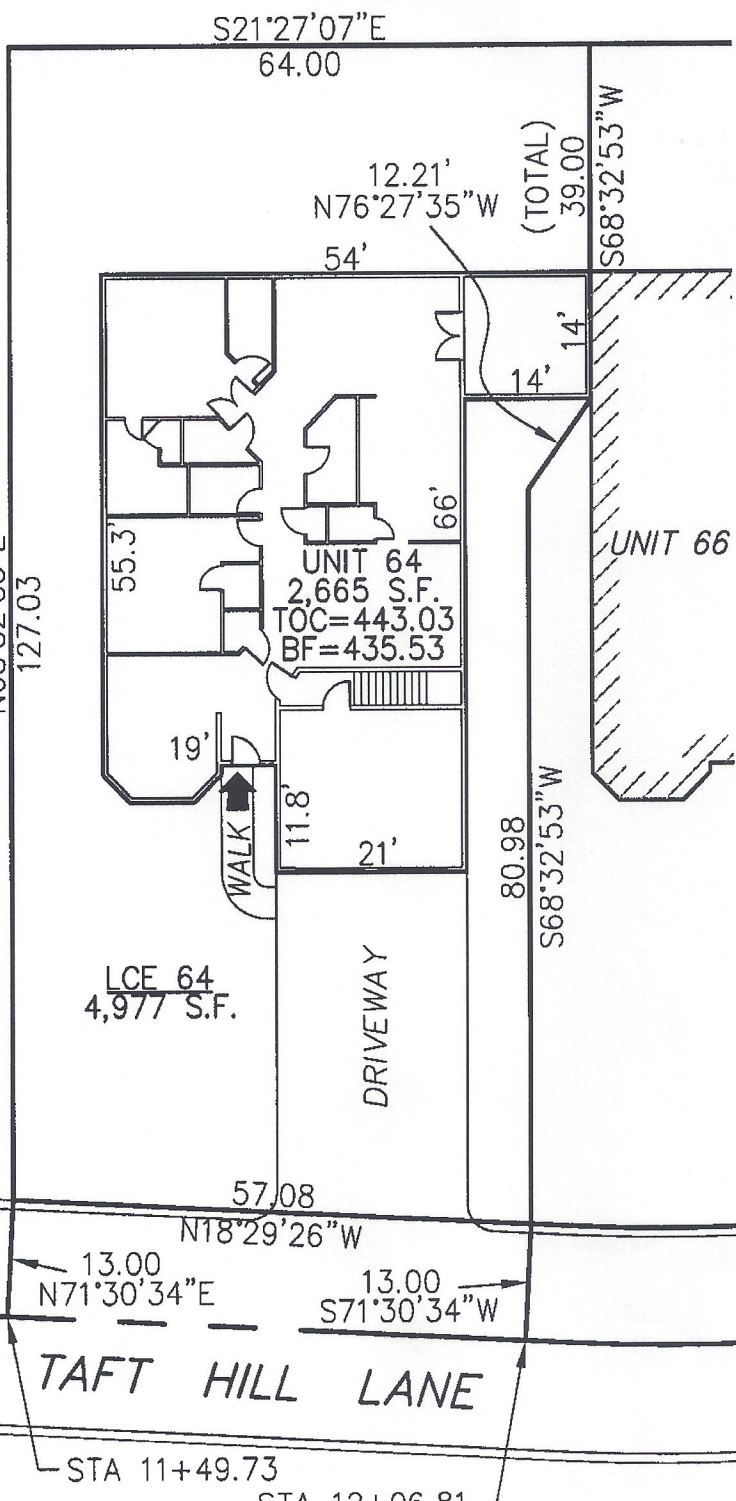
SUB-PHASE 1B

LCE 64 = 4,977 S.F.
COMMON ELEMENT = 46,782± S.F.



SUB-PHASE 1B COMMON ELEMENT

N68°32'53"E
127.03



UNIT 64
2,665 S.F.
TOC=443.03
BF=435.53

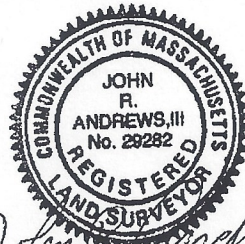
UNIT 66

LCE 64
4,977 S.F.

DRIVEWAY

PLAN REFERENCE:
PLAN BOOK 838, PLAN 87

I CERTIFY THAT THIS PLAN SHOWS THE UNIT BEING CONVEYED AND OF IMMEDIATE ADJOINING UNITS, AND THAT IT FULLY AND ACCURATELY DEPICTS THE LAYOUT, LOCATION, DIMENSIONS, APPROXIMATE AREA, UNIT NUMBER, MAIN ENTRANCE, AND IMMEDIATE COMMON AREA TO WHICH IT HAS ACCESS, AS BUILT.



John R. Andrews, III 2/22/06
JOHN R. ANDREWS, III, P.L.S. DATE

SUMMERFIELD AT TAFT HILL CONDOMINIUM - SUB-PHASE 1B
TAFT HILL LANE, UXBRIDGE, MA

FAIRWAY UNIT PLAN - 64 TAFT HILL LANE

Andrews Survey & Engineering, Inc.
Land Surveying, Civil Engineering, Site Planning
P.O. Box 242, 104 Mendon Street
Uxbridge, Massachusetts 01569-0312
P: 508-278-3997 F: 508-278-2289

REVISIONS:	SCALE: 1"=20'	DATE: 11-21-05
1. 2/14/06 - ADDED INTERIOR WALLS	DRAWN BY: SJO	CHK'D BY: JRA
64 Taft Hill Lane	JOB: 2004-439	FILE: phase1B

ATTEST: WONG, Annemly J. Vignola, Registrar