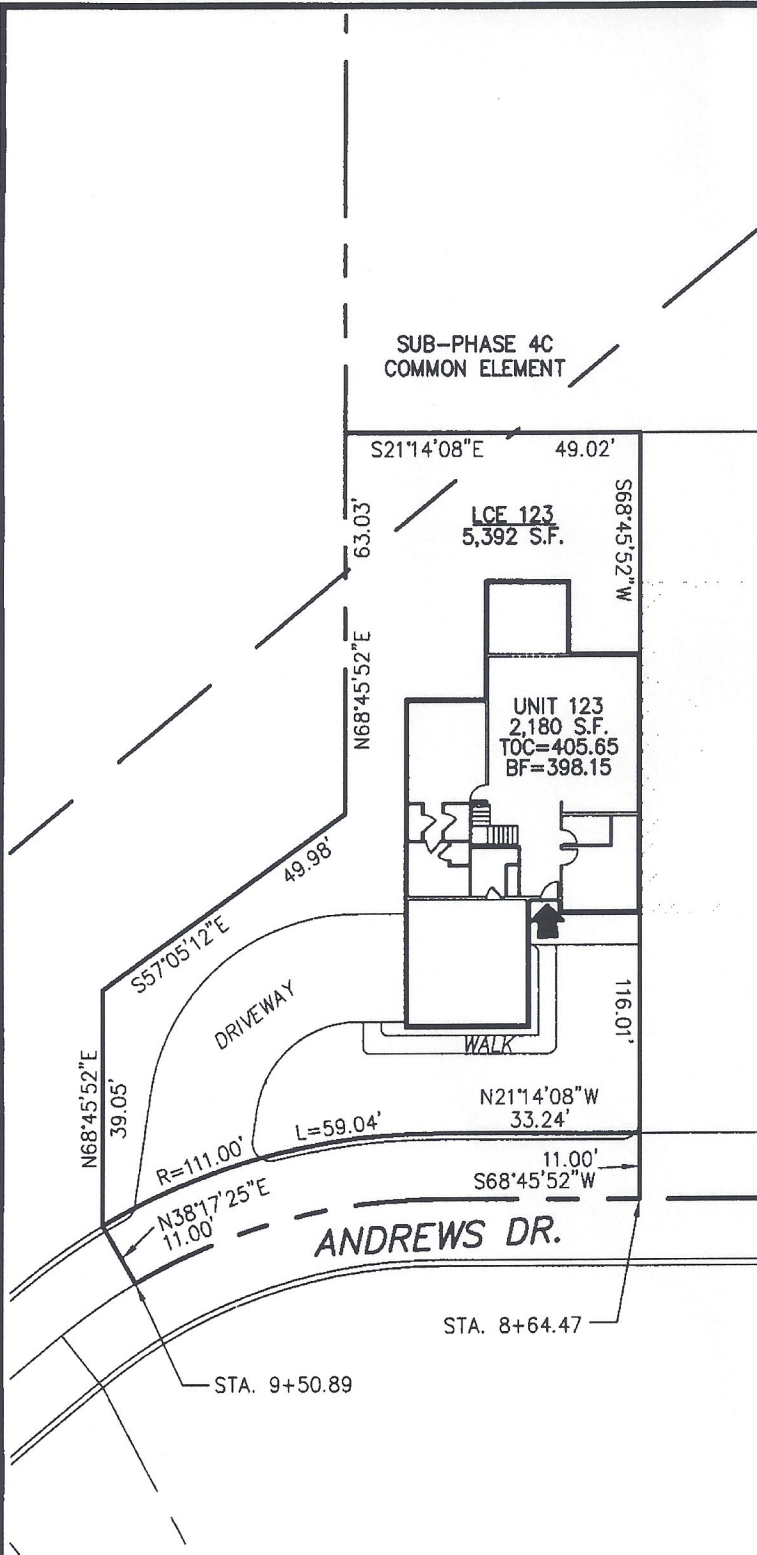


DECLARATION LEGEND

SUB-PHASE 4C

LCE 123 = 5,392 S.F.

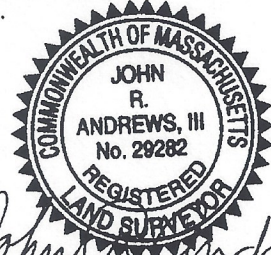
COMMON ELEMENT = 62,386± S.F.



*WCH LAYOUT
H-2441-R*

PLAN REFERENCE:
PLAN BOOK _____, PLAN _____

I CERTIFY THAT THIS PLAN SHOWS THE UNIT BEING CONVEYED AND OF IMMEDIATE ADJOINING UNITS, AND THAT IT FULLY AND ACCURATELY DEPICTS THE LAYOUT, LOCATION, DIMENSIONS, APPROXIMATE AREA, UNIT NUMBER, MAIN ENTRANCE, AND IMMEDIATE COMMON AREA TO WHICH IT HAS ACCESS, AS BUILT.



John R. Andrews III

**SUMMERFIELD AT TAFT HILL CONDOMINIUM - SUB-PHASE 4C
ANDREWS DRIVE, UXBRIDGE, MA**

VILLAGE UNIT PLAN - UNIT 123 ANDREWS DRIVE

Andrews Survey & Engineering, Inc.
Land Surveying - Civil Engineering - Site Planning

P.O. Box 312, 104 Mendon Street
Uxbridge, Massachusetts 01569-0312
P: 508-278-3897 F: 508-278-2289

REVISIONS:	SCALE: 1"=30'	DATE: 6/11/13
	DRAWN BY: TRB	CHK'D BY: JRA
<i>43 Andrews</i>	JOB: 2004-439	FILE: PHASE4C

ATTEST: WORC. Anthony J. Vigliotti, Register