

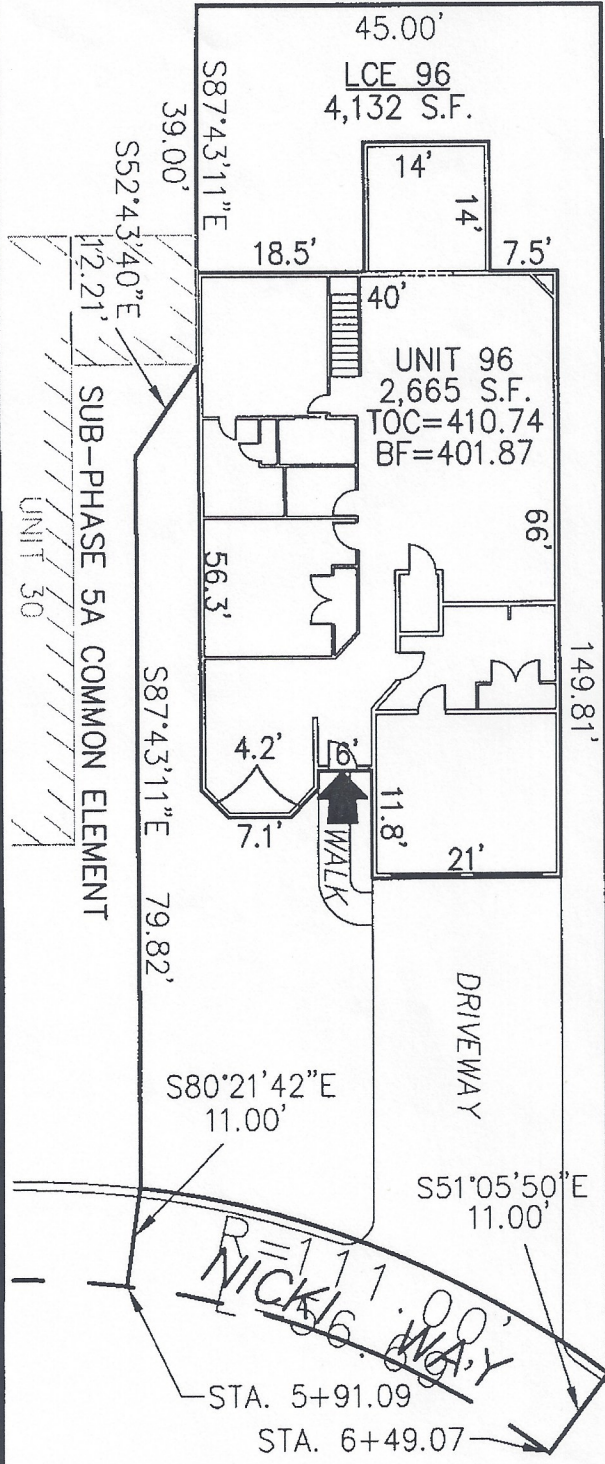
SUB-PHASE 5A COMMON ELEMENT
N02°16'49"E

DECLARATION LEGEND

SUB-PHASE 5A

LCE 96 = 4,132 S.F.

COMMON ELEMENT = 138,838± S.F.

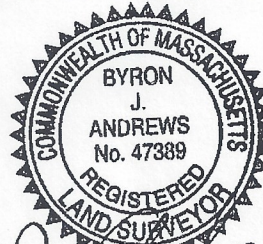


WCH LAYOUT
H-2441-R

SUB-PHASE 5A COMMON ELEMENT

PLAN REFERENCE:
PLAN BOOK , PLAN

I CERTIFY THAT THIS PLAN SHOWS THE UNIT BEING CONVEYED AND OF IMMEDIATE ADJOINING UNITS, AND THAT IT FULLY AND ACCURATELY DEPICTS THE LAYOUT, LOCATION, DIMENSIONS, APPROXIMATE AREA, UNIT NUMBER, MAIN ENTRANCE, AND IMMEDIATE COMMON AREA TO WHICH IT HAS ACCESS, AS BUILT.



Byron J. Andrews 4/20/12

**SUMMERFIELD AT TAFT HILL CONDOMINIUM - SUB-PHASE 5A
ANDREWS DRIVE, UXBRIDGE, MA**

FAIRWAY UNIT PLAN - UNIT 96 NICKI WAY

Andrews Survey & Engineering, Inc.
Land Surveying - Civil Engineering - Site Planning

REVISIONS:	SCALE: 1"=20'	DATE: 4/20/12
	DRAWN BY: SJO	CHK'D BY: JRA
	JOB: 2004-439	FILE: PHASE5A.dwg

P.O. Box 312, 104 Mendon Street
Uxbridge, Massachusetts 01569-0312
P: 508-278-3897 F: 508-278-2289

32 Nicki Way

ATTEST: WORC. Anthony J. Vigliotti, Register