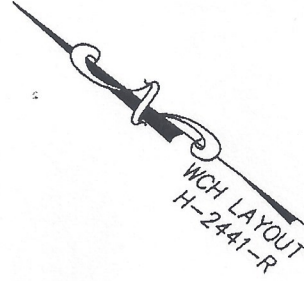
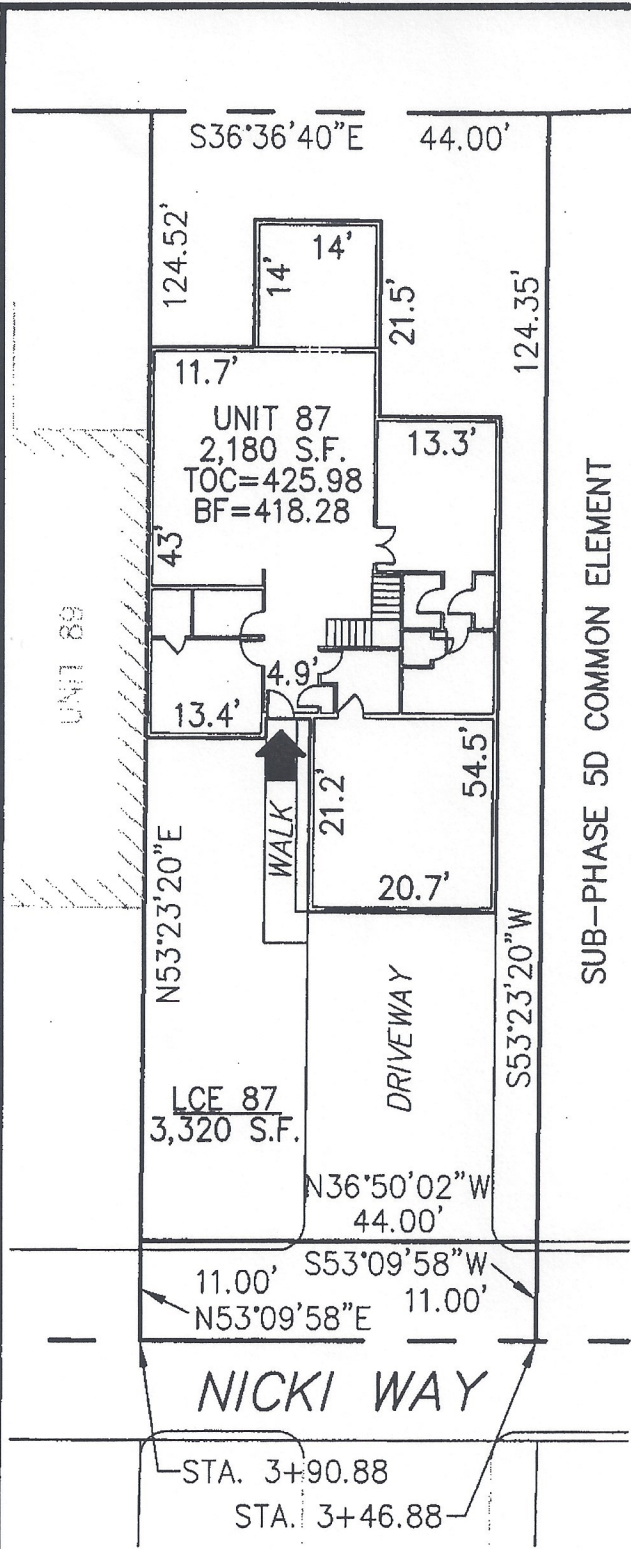


DECLARATION LEGEND

SUB-PHASE 5D

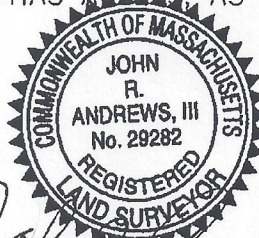
LCE 87 = 3,320 S.F.

COMMON ELEMENT = 28,845± S.F.



PLAN REFERENCE:
PLAN BOOK , PLAN

I CERTIFY THAT THIS PLAN SHOWS THE UNIT BEING CONVEYED AND OF IMMEDIATE ADJOINING UNITS, AND THAT IT FULLY AND ACCURATELY DEPICTS THE LAYOUT, LOCATION, DIMENSIONS, APPROXIMATE AREA, UNIT NUMBER, MAIN ENTRANCE, AND IMMEDIATE COMMON AREA TO WHICH IT HAS ACCESS, AS BUILT.



John R. Andrews III 11/27/13

**SUMMERFIELD AT TAFT HILL CONDOMINIUM - SUB-PHASE 5D
NICKI WAY, UXBRIDGE, MA**

VILLAGE UNIT PLAN - UNIT 87 NICKI WAY

Andrews Survey & Engineering, Inc.
Land Surveying - Civil Engineering - Site Planning

REVISIONS:	SCALE: 1"=20'	DATE: 11/26/13
	DRAWN BY: TRB	CHK'D BY: JRA
19 Nicki	JOB: 2004-439	FILE: PHASE5D.dwg

P.O. Box 312, 104 Mendon Street
Uxbridge, Massachusetts 01569-0312
P: 508-278-3897 F: 508-278-2289