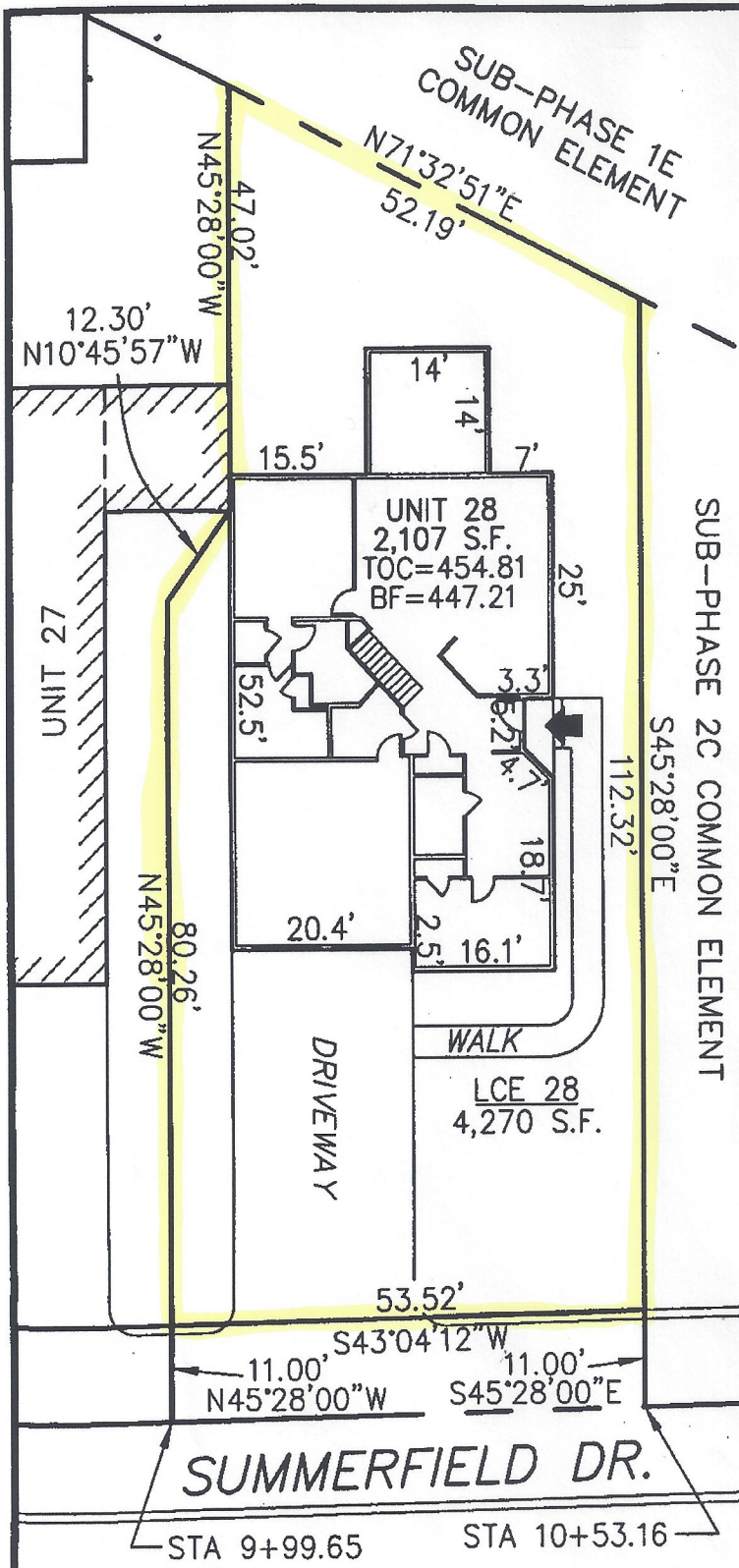
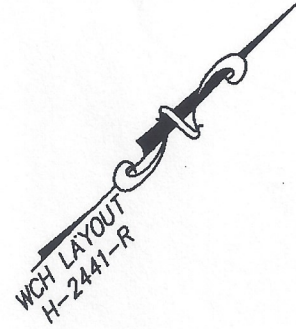


DECLARATION LEGEND

SUB-PHASE 2C

LCE 28 = 4,270 S.F

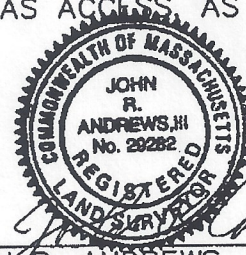
COMMON ELEMENT = 65,106± S.F.



SUB-PHASE 2C COMMON ELEMENT

PLAN REFERENCE:
PLAN BOOK , PLAN

I CERTIFY THAT THIS PLAN SHOWS THE UNIT BEING CONVEYED AND OF IMMEDIATE ADJOINING UNITS, AND THAT IT FULLY AND ACCURATELY DEPICTS THE LAYOUT, LOCATION, DIMENSIONS, APPROXIMATE AREA, UNIT NUMBER, MAIN ENTRANCE, AND IMMEDIATE COMMON AREA TO WHICH IT HAS ACCESS, AS BUILT.

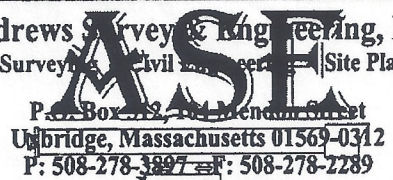


John R. Andrews, III 8/23/06
JOHN R. ANDREWS, III, P.L.S. DATE

**SUMMERFIELD AT TAFT HILL CONDOMINIUM - SUB-PHASE 2C
SUMMERFIELD DRIVE, UXBRIDGE, MA**

DOVER UNIT PLAN - UNIT 28 SUMMERFIELD DR.

Andrews Survey & Engineering, Inc.
Land Surveying Civil Engineering Site Planning



REVISIONS:	SCALE: 1"=20'	DATE: 8-18-06
	DRAWN BY: TRB	CHK'D BY: JRA
52 Summerfield	JOB: 2004-439	FILE: phase2C

ATTEST: WORC. Anthony J. Vigilanti, Register