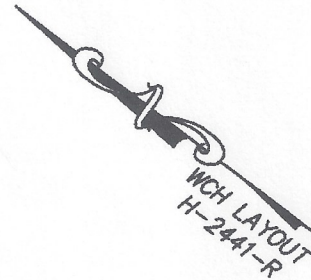


DECLARATION LEGEND

SUB-PHASE 5C

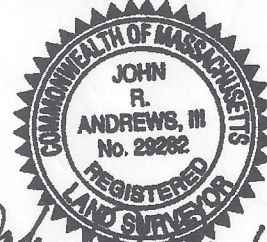
LCE 90 = 3,796 S.F.

COMMON ELEMENT = 27,608± S.F.

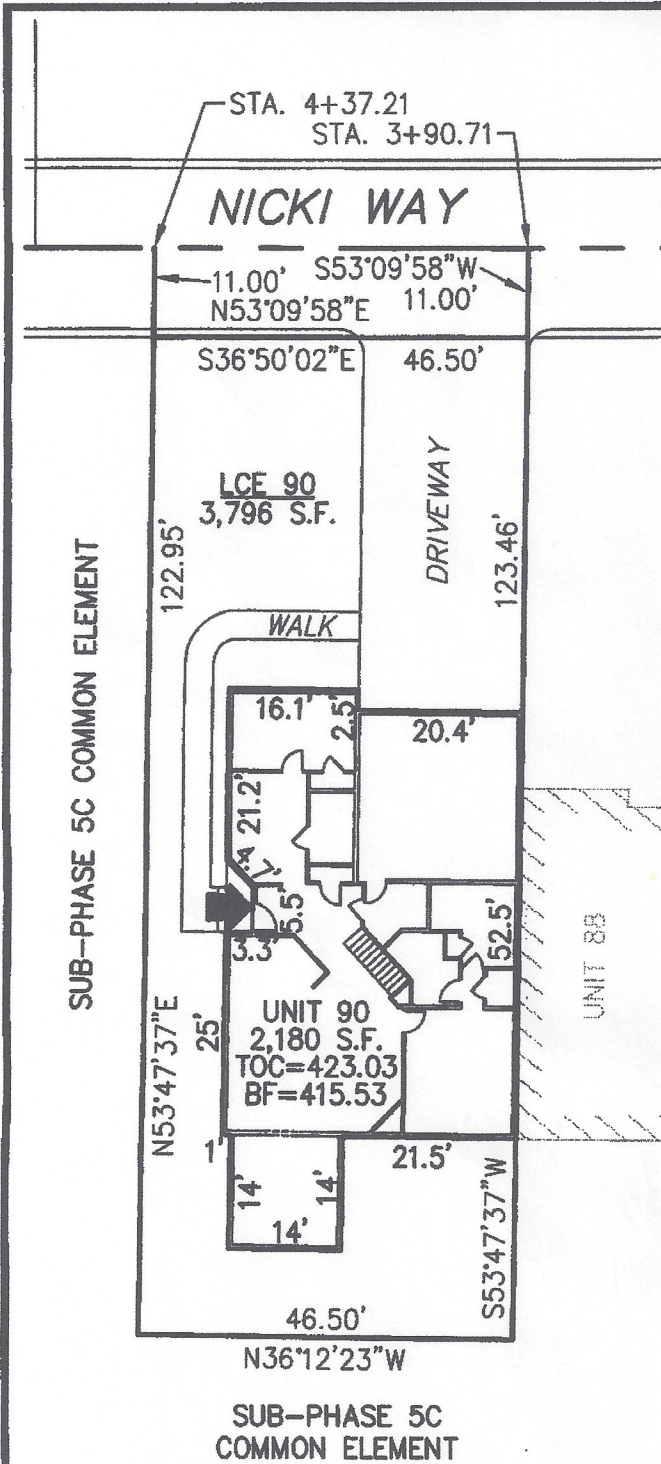


PLAN REFERENCE:
PLAN BOOK _____, PLAN _____

I CERTIFY THAT THIS PLAN SHOWS THE UNIT BEING CONVEYED AND OF IMMEDIATE ADJOINING UNITS, AND THAT IT FULLY AND ACCURATELY DEPICTS THE LAYOUT, LOCATION, DIMENSIONS, APPROXIMATE AREA, UNIT NUMBER, MAIN ENTRANCE, AND IMMEDIATE COMMON AREA TO WHICH IT HAS ACCESS, AS BUILT.



John R. Andrews III
7-19-12



**SUMMERFIELD AT TAFT HILL CONDOMINIUM - SUB-PHASE 5C
NICKI WAY, UXBRIDGE, MA**

DOVER UNIT PLAN - UNIT 90 NICKI WAY

Andrews Survey & Engineering, Inc.
Land Surveying, Civil Engineering, Site Planning

ASA
P.O. Box 112, 104 Mendon Street
Uxbridge, Massachusetts 01569-0312
P: 508-278-3897 F: 508-278-2289

REVISIONS:	SCALE: 1"=20'	DATE: 7/11/12
	DRAWN BY: TRB	CHK'D BY: JRA
22 Nicki Way	JOB: 2004-439	FILE: PHASE5C.dwg

ATTEST: WORC. Anthony J. Vignola, Registrar