

SUB-PHASE 1C COMMON ELEMENT

DECLARATION LEGEND

SUB-PHASE 1C

LCE 72 = 5,501 S.F.

COMMON ELEMENT = 47,608± S.F.

SUB-PHASE 1C COMMON ELEMENT

N43°10'54"E

128.04'

S46°49'06"E

53.50'

S08°15'18"W
12.20'

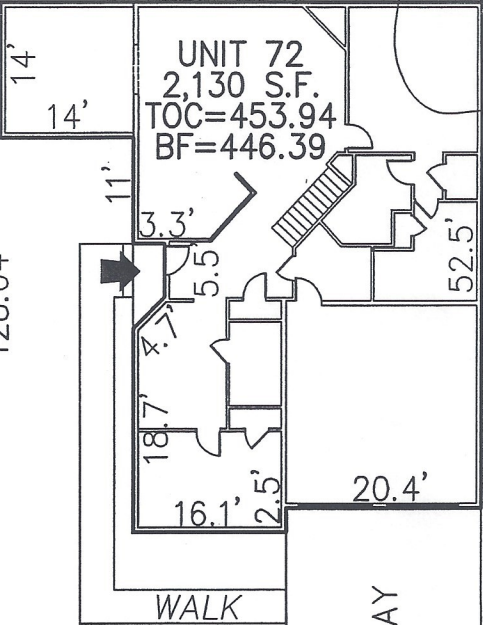
36.5'

S43°10'54"W
39.00'

25'

6' 8"

6'



UNIT 72
2,130 S.F.
TOC=453.94
BF=446.39

UNIT 74

LCE 72
5,501 S.F.

DRIVEWAY

WALK

S43°10'54"W

78.92'

N46°55'48"W

60.48'

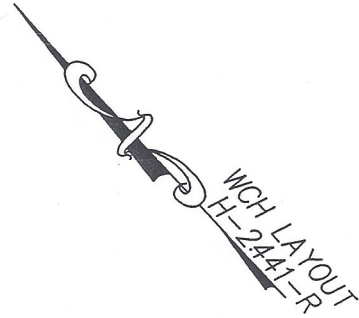
13.00'
N43°04'12"E

13.00'
S43°04'12"W

TAFT HILL LANE

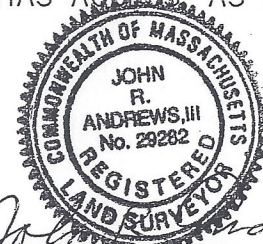
STA 13+32.77

STA 13+93.25



PLAN REFERENCE:
PLAN BOOK , PLAN

I CERTIFY THAT THIS PLAN SHOWS THE UNIT BEING CONVEYED AND OF IMMEDIATE ADJOINING UNITS, AND THAT IT FULLY AND ACCURATELY DEPICTS THE LAYOUT, LOCATION, DIMENSIONS, APPROXIMATE AREA, UNIT NUMBER, MAIN ENTRANCE, AND IMMEDIATE COMMON AREA TO WHICH IT HAS ACCESS, AS BUILT.



John R. Andrews, III
JOHN R. ANDREWS, III, P.L.S.

DATE:

SUMMERFIELD AT TAFT HILL CONDOMINIUM - SUB-PHASE 1C
TAFT HILL LANE, UXBRIDGE, MA

DOVER UNIT PLAN - 72 TAFT HILL LANE

Andrews Survey & Engineering, Inc.
Land Surveying Civil Engineering Site Planning
AS&E
P.O. Box 312, 104 Mendon Street
Uxbridge, Massachusetts 01569-0312
P: 508-278-3897 F: 508-278-2289

REVISIONS:	SCALE: 1'=20'	DATE: 12-14-05
1. 2/14/06 - ADDED INTERIOR WALLS	DRAWN BY: SJO	CHK'D BY: JRA
72 Taft Hill Lane	JOB: 2004-439	FILE: phase1C