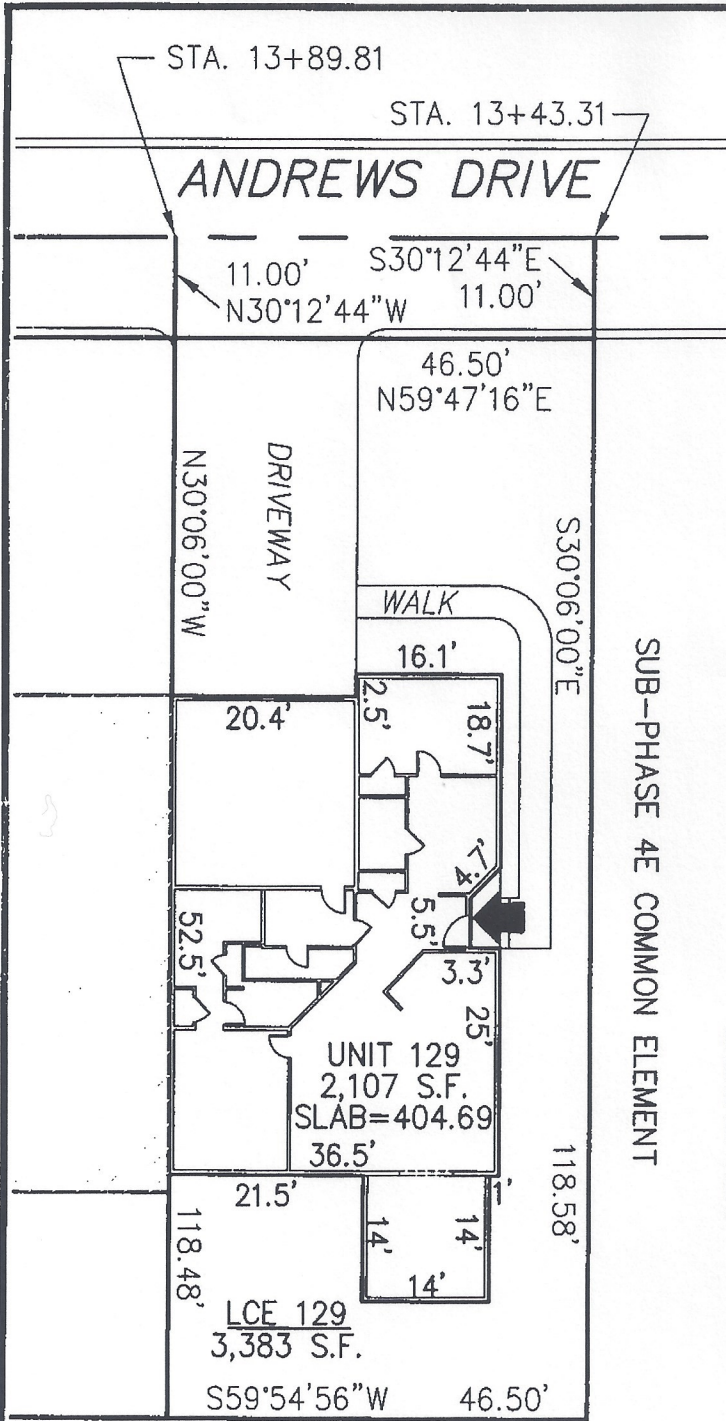


**DECLARATION LEGEND**

**SUB-PHASE 4E**

LCE 129 = 3,383 S.F.

COMMON ELEMENT = 36,994± S.F.

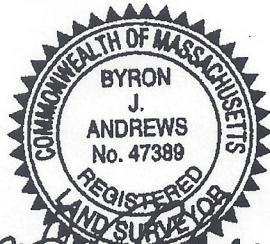


SUB-PHASE 4E COMMON ELEMENT



PLAN REFERENCE:  
PLAN BOOK , PLAN

I CERTIFY THAT THIS PLAN SHOWS THE UNIT BEING CONVEYED AND OF IMMEDIATE ADJOINING UNITS, AND THAT IT FULLY AND ACCURATELY DEPICTS THE LAYOUT, LOCATION, DIMENSIONS, APPROXIMATE AREA, UNIT NUMBER, MAIN ENTRANCE, AND IMMEDIATE COMMON AREA TO WHICH IT HAS ACCESS, AS BUILT.



*Byron J. Andrews* 10/21/13

**SUMMERFIELD AT TAFT HILL CONDOMINIUM - SUB-PHASE 4E  
ANDREWS DRIVE, UXBRIDGE, MA**

**DOVER UNIT PLAN - UNIT 129 ANDREWS DR.**

**Andrews Survey & Engineering, Inc.**  
Land Surveying - Civil Engineering - Site Planning

REVISIONS:	SCALE: 1"=20'	DATE: 10/8/13
	DRAWN BY: TRB	CHK'D BY: JRA
68 Andrews	JOB: 2004-439	FILE: PHASE4E_REV.dwg

P.O. Box 312, 104 Mendon Street  
Uxbridge, Massachusetts 01569-0312  
P: 508-278-3897 F: 508-278-2289

ATTEST: WORC. Anthony J. Vigliotti, Register