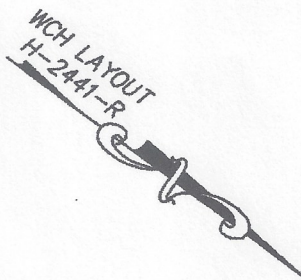


SUB-PHASE 5A
COMMON ELEMENT

DECLARATION LEGEND

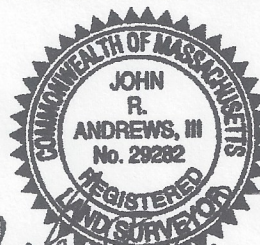
SUB-PHASE 5A

LCE 93 = 3,314 S.F.
COMMON ELEMENT = 120,663± S.F.

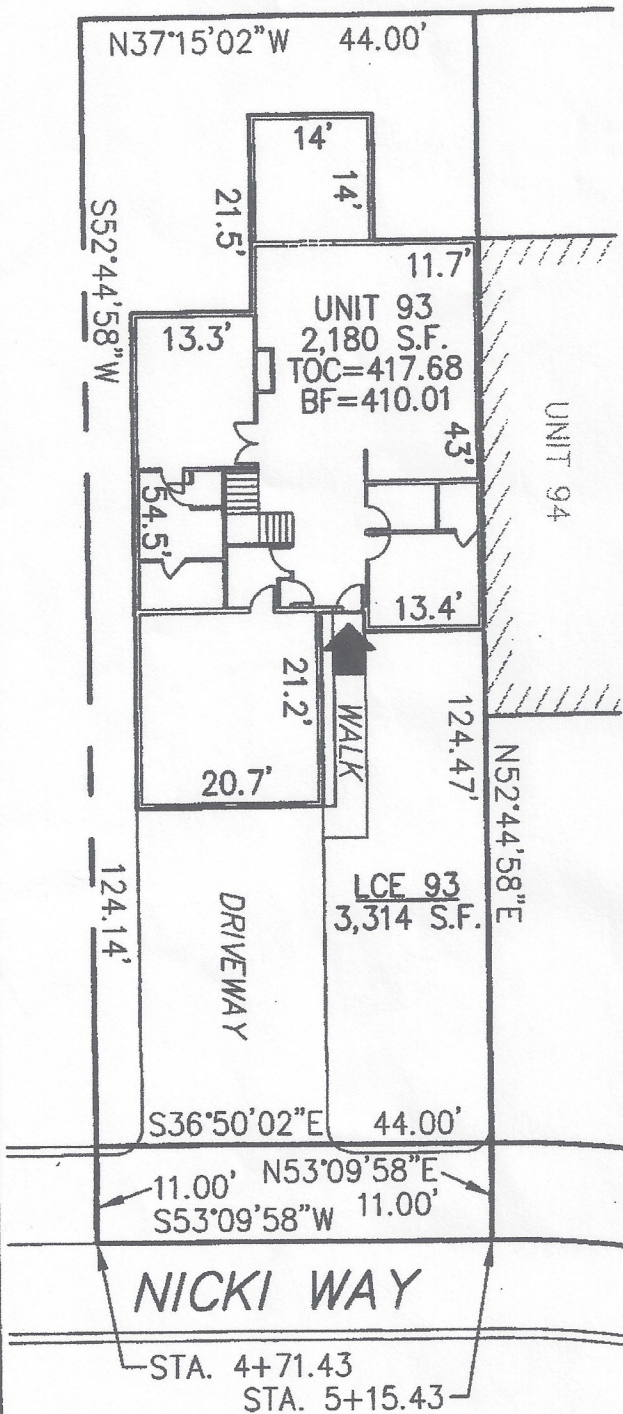


PLAN REFERENCE:
PLAN BOOK , PLAN

I CERTIFY THAT THIS PLAN SHOWS THE UNIT BEING CONVEYED AND OF IMMEDIATE ADJOINING UNITS, AND THAT IT FULLY AND ACCURATELY DEPICTS THE LAYOUT, LOCATION, DIMENSIONS, APPROXIMATE AREA, UNIT NUMBER, MAIN ENTRANCE, AND IMMEDIATE COMMON AREA TO WHICH IT HAS ACCESS, AS BUILT.



John R. Andrews, III



SUMMERFIELD AT TAFT HILL CONDOMINIUM - SUB-PHASE 5A
NICKI WAY, UXBRIDGE, MA

VILLAGE UNIT PLAN - UNIT 93 NICKI WAY

Andrews Survey & Engineering, Inc.
Land Surveying, Civil Engineering, Site Planning

Post Box 292, 104 Mendon Street
Uxbridge, Massachusetts 01569-0312
P: 508-278-9897 F: 508-278-2289

REVISIONS:	SCALE: 1"=20'	DATE: 5/9/12
26 Nicki Way	DRAWN BY: TRB	CHK'D BY: JRA
	JOB: 2004-439	FILE: PHASE5A.dwg

ATTEST: WORC. Anthony J. Vigliotti, Register