

DECLARATION LEGEND

SUB-PHASE 4D

LCE 122 = 3,459 S.F.

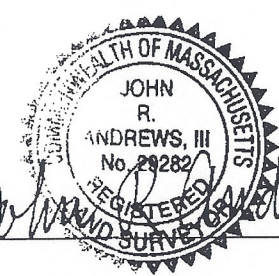
COMMON ELEMENT = 60,070± S.F.

WCH LAYOUT
H-2441-R

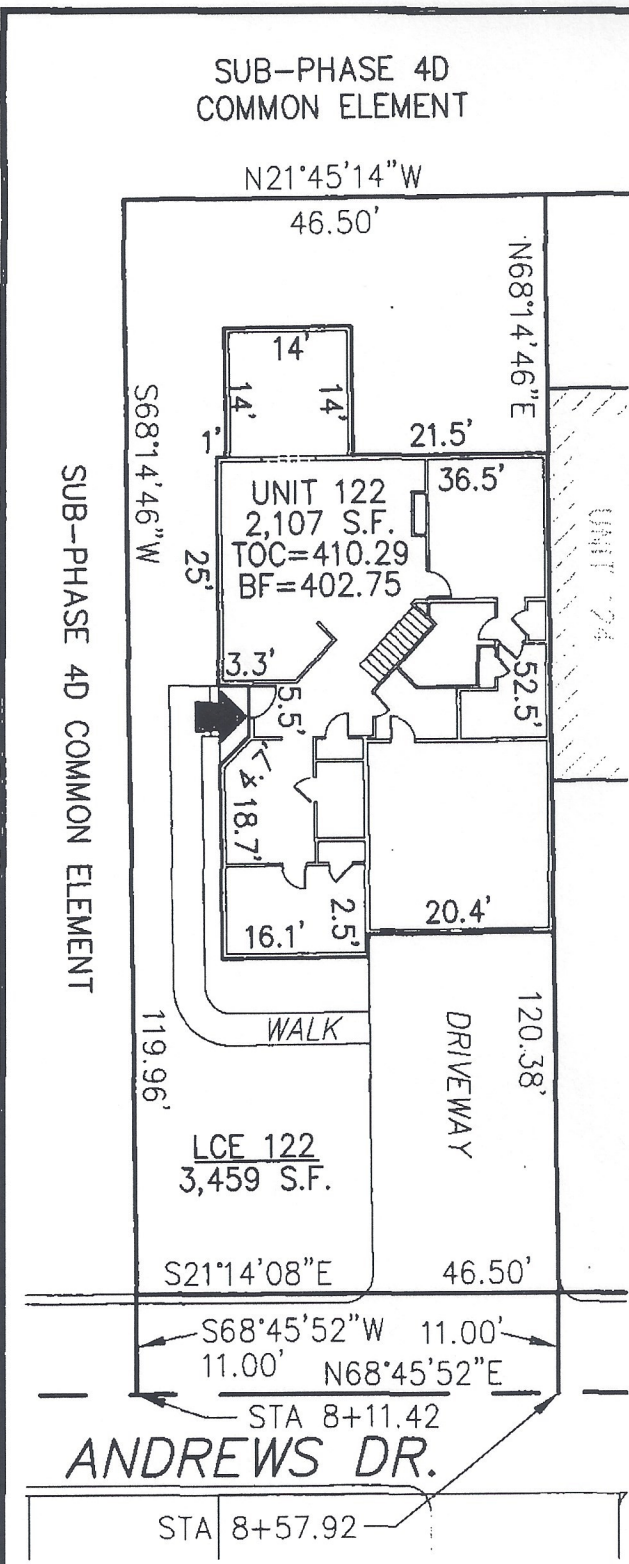


PLAN REFERENCE:
PLAN BOOK , PLAN

I CERTIFY THAT THIS PLAN SHOWS THE UNIT BEING CONVEYED AND OF IMMEDIATE ADJOINING UNITS, AND THAT IT FULLY AND ACCURATELY DEPICTS THE LAYOUT, LOCATION, DIMENSIONS, APPROXIMATE AREA, UNIT NUMBER, MAIN ENTRANCE, AND IMMEDIATE COMMON AREA TO WHICH IT HAS ACCESS, AS BUILT.



John R. Andrews III
9/24/13



**SUMMERFIELD AT TAFT HILL CONDOMINIUM - SUB-PHASE 4D
ANDREWS DRIVE, UXBRIDGE, MA**

DOVER UNIT PLAN - UNIT 122 ANDREWS DRIVE

Andrews Survey & Engineering, Inc.
Land Surveying - Civil Engineering - Site Planning

REVISIONS:	SCALE: 1"=20'	DATE: 9/24/13
	DRAWN BY: TRB	CHK'D BY: JRA
<i>42 Andrews</i>	JOB: 2004-439	FILE: PHASE4D_REV

P.O: Box 312, 104 Mendon Street
Uxbridge, Massachusetts 01569-0312
P: 508-278-3897 ; F: 508-278-2289