

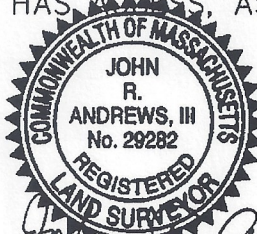
DECLARATION LEGEND
SUB-PHASE 3B
 LCE 37 = 3,287 S.F.
 COMMON ELEMENT = 56,185± S.F.

WCH LAYOUT
 H-2441-R

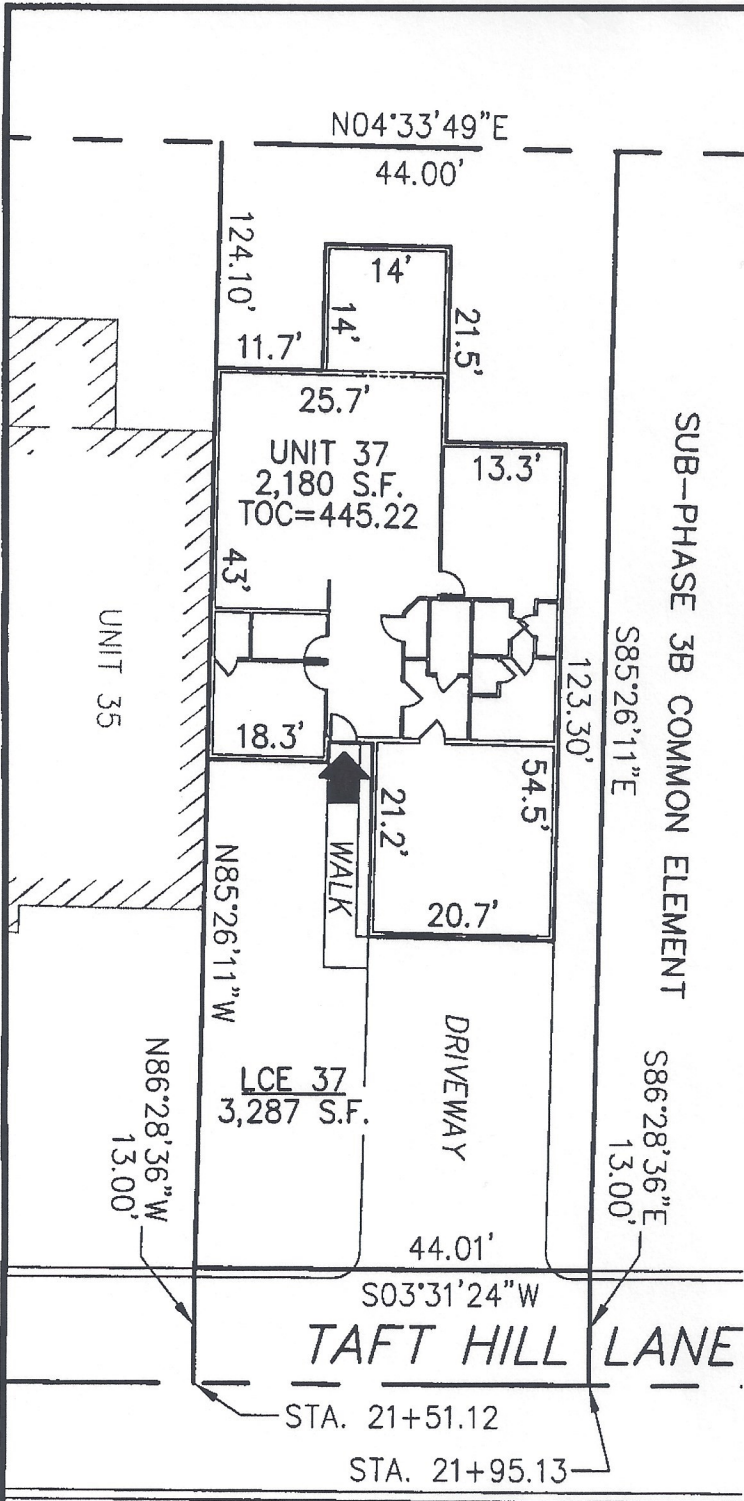


PLAN REFERENCE:
 PLAN BOOK _____, PLAN _____

I CERTIFY THAT THIS PLAN SHOWS THE UNIT BEING CONVEYED AND OF IMMEDIATE ADJOINING UNITS, AND THAT IT FULLY AND ACCURATELY DEPICTS THE LAYOUT, LOCATION, DIMENSIONS, APPROXIMATE AREA, UNIT NUMBER, MAIN ENTRANCE, AND IMMEDIATE COMMON AREA TO WHICH IT HAS ACCESS, AS BUILT.



John R. Andrews III 9/18/08
 JOHN R. ANDREWS, III, P.L.S. DATE



SUMMERFIELD AT TAFT HILL CONDOMINIUM - SUB-PHASE 3B
TAFT HILL LANE, UXBRIDGE, MA

VILLAGE UNIT PLAN - UNIT 37 TAFT HILL LANE		
REVISIONS:	SCALE: 1"=20'	DATE: 9-15-08
	DRAWN BY: TRB	CHK'D BY: JRA
<i>110 Taft Hill Lane</i>	JOB: 2004-439	FILE: PHASE3B

Andrews Survey & Engineering, Inc.
 Land Surveying, Civil Engineering, Site Planning

ASE
 P.O. Box 112, 104 Mendon Street
 Uxbridge, Massachusetts 01569-0312
 P: 508-278-3897 F: 508-278-2289

ATTEST: WORC. Anthony J. Vigliotti, Register