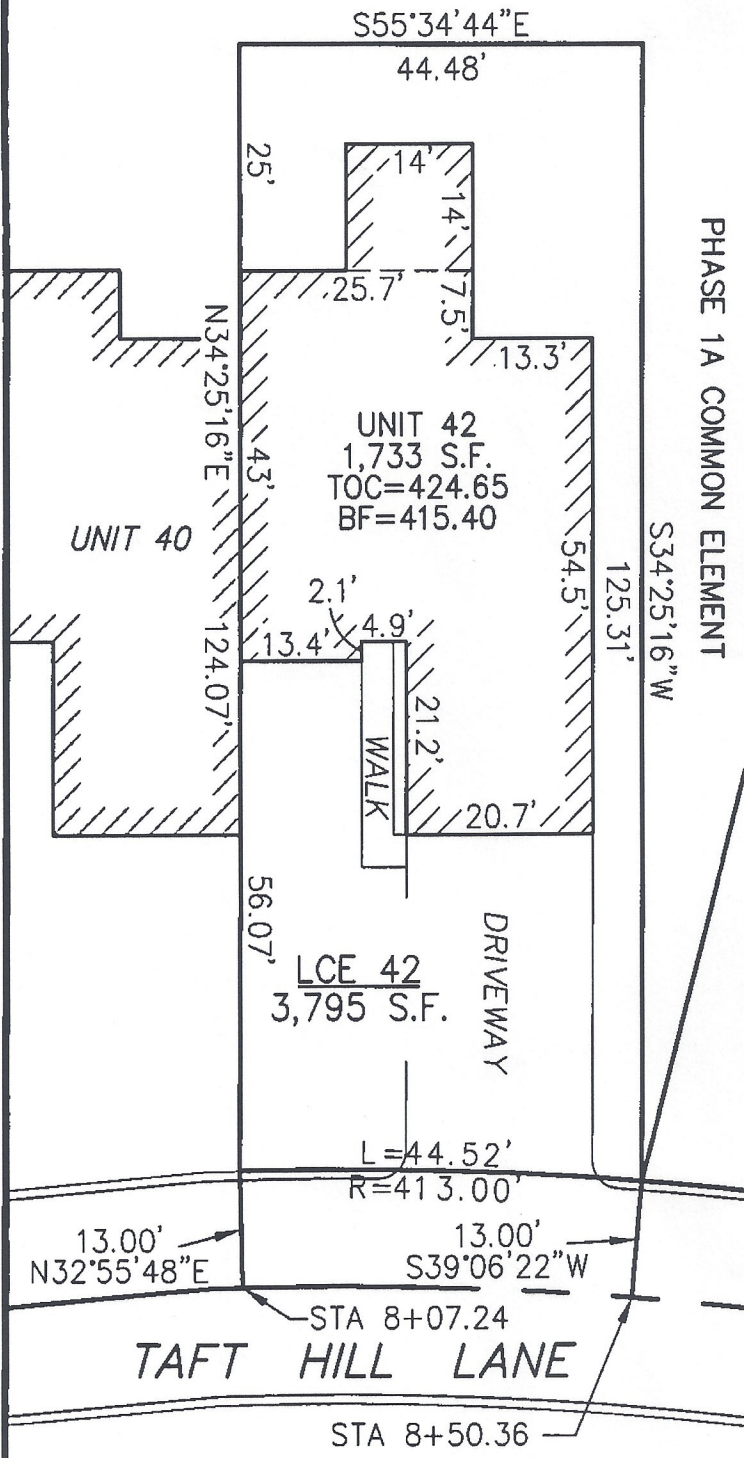


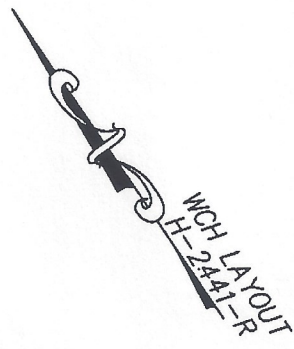
PHASE 1A COMMON ELEMENT

**DECLARATION LEGEND**

**PHASE 1A**  
 LCE 42 = 3,795 S.F.  
 COMMON ELEMENT = 341,955± S.F.

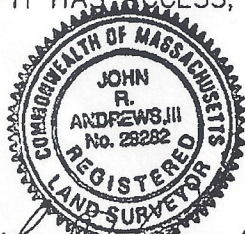


PHASE 1A COMMON ELEMENT



PLAN REFERENCE:  
 PLAN BOOK 837, PLAN 95

I CERTIFY THAT THIS PLAN SHOWS THE UNIT BEING CONVEYED AND OF IMMEDIATE ADJOINING UNITS, AND THAT IT FULLY AND ACCURATELY DEPICTS THE LAYOUT, LOCATION, DIMENSIONS, APPROXIMATE AREA, UNIT NUMBER, MAIN ENTRANCE, AND IMMEDIATE COMMON AREA TO WHICH IT HAS ACCESS, AS BUILT.



*John R. Andrews, III* 1/31/06  
 JOHN R. ANDREWS, III, P.L.S. DATE

SUMMERFIELD AT TAFT HILL CONDOMINIUM - PHASE 1A  
 DOUGLAS STREET, UXBRIDGE, MA

VILLAGE UNIT PLAN - 42 TAFT HILL LANE

Andrews Survey & Engineering, Inc.  
 Land Surveying Civil Engineering Site Planning

**ASE**

P.O. Box 242, 104 Mendon Street  
 Uxbridge, Massachusetts 01569-0312  
 P: 508-278-3897 F: 508-278-2289

REVISIONS:	SCALE: 1"=20'	DATE: 1-30-06
	DRAWN BY: SJO	CHK'D BY: JRA
42 Taft Hill Lane	JOB: 2004-439	FILE: phase1A_rev

ATTEST: WORG. Anthony J. Vignolo, Register