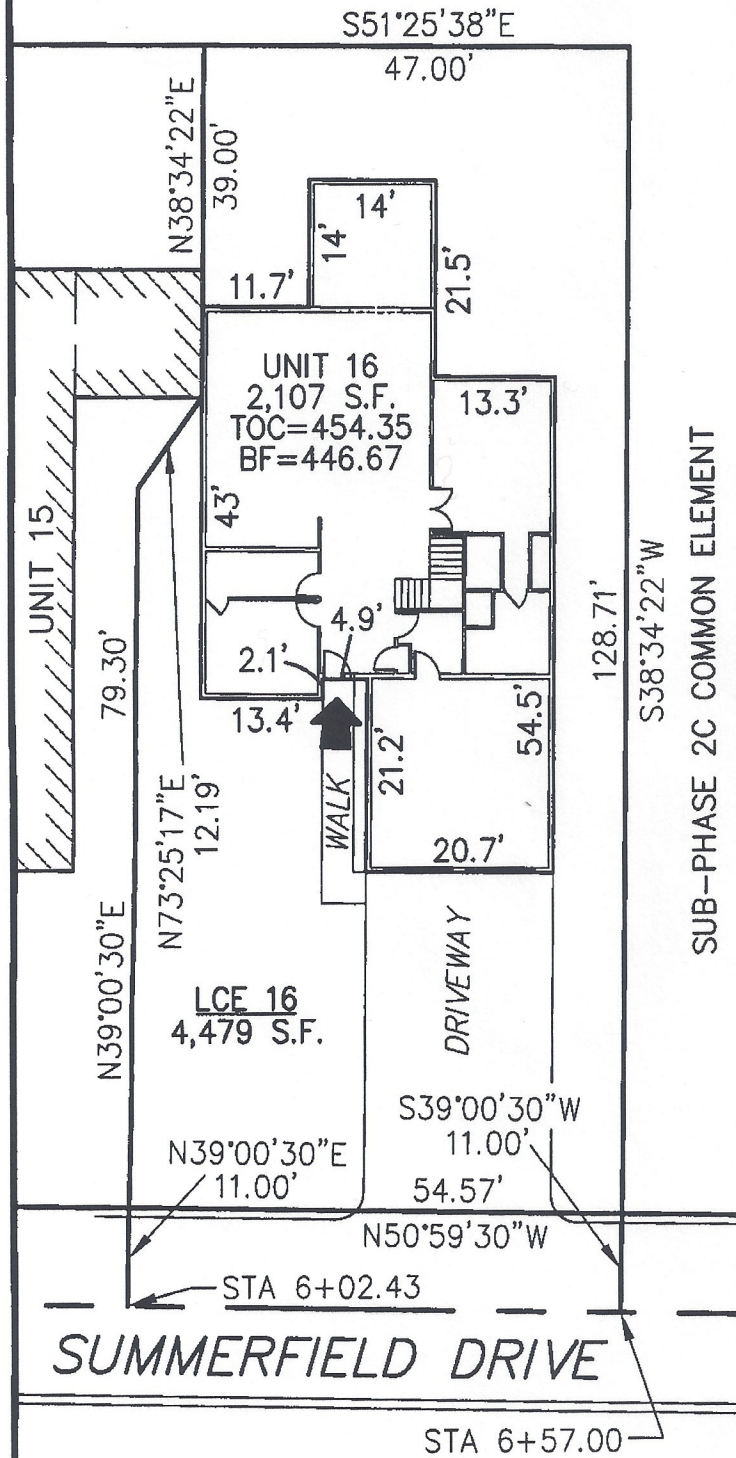
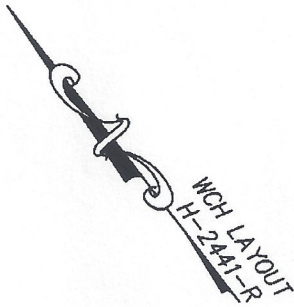


SUB-PHASE 2C COMMON ELEMENT



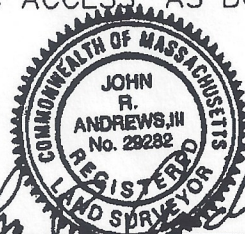
DECLARATION LEGEND

SUB-PHASE 2C
 LCE 16 = 4,479 S.F.
 COMMON ELEMENT = 39,622± S.F.



PLAN REFERENCE:
 PLAN BOOK , PLAN

I CERTIFY THAT THIS PLAN SHOWS THE UNIT BEING CONVEYED AND OF IMMEDIATE ADJOINING UNITS, AND THAT IT FULLY AND ACCURATELY DEPICTS THE LAYOUT, LOCATION, DIMENSIONS, APPROXIMATE AREA, UNIT NUMBER, MAIN ENTRANCE, AND IMMEDIATE COMMON AREA TO WHICH IT HAS ACCESS, AS BUILT.



John R. Andrews, III 6/11/07
 JOHN R. ANDREWS, III, P.L.S. DATE

SUMMERFIELD AT TAFT HILL CONDOMINIUM - SUB-PHASE 2C
 SUMMERFIELD DRIVE, UXBRIDGE, MA

VILLAGE UNIT PLAN - UNIT 16 SUMMERFIELD DR.		Andrews Survey & Engineering, Inc. Land Surveying, Civil Engineering, Site Planning	
REVISIONS:	SCALE: 1"=20'	6-7-07	 P.O. Box 112, 104 Mendon Street Uxbridge, Massachusetts 01569-0312 P: 508-278-3897 F: 508-278-2289
	DRAWN BY: TRB	CHK'D BY: JRA	
32 Summerfield	JOB: 2004-439	FILE: phase2C_revised(3)	

ATTEST: WORC. Anthony J. Viglotti, Register