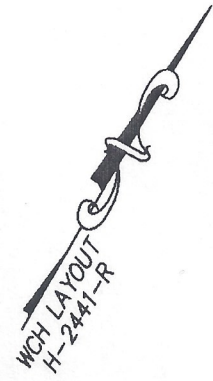


DECLARATION LEGEND

SUB-PHASE 5F

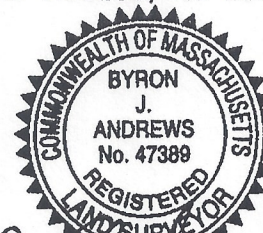
LCE 97 = 3,785 S.F.

COMMON ELEMENT = 15,284± S.F.

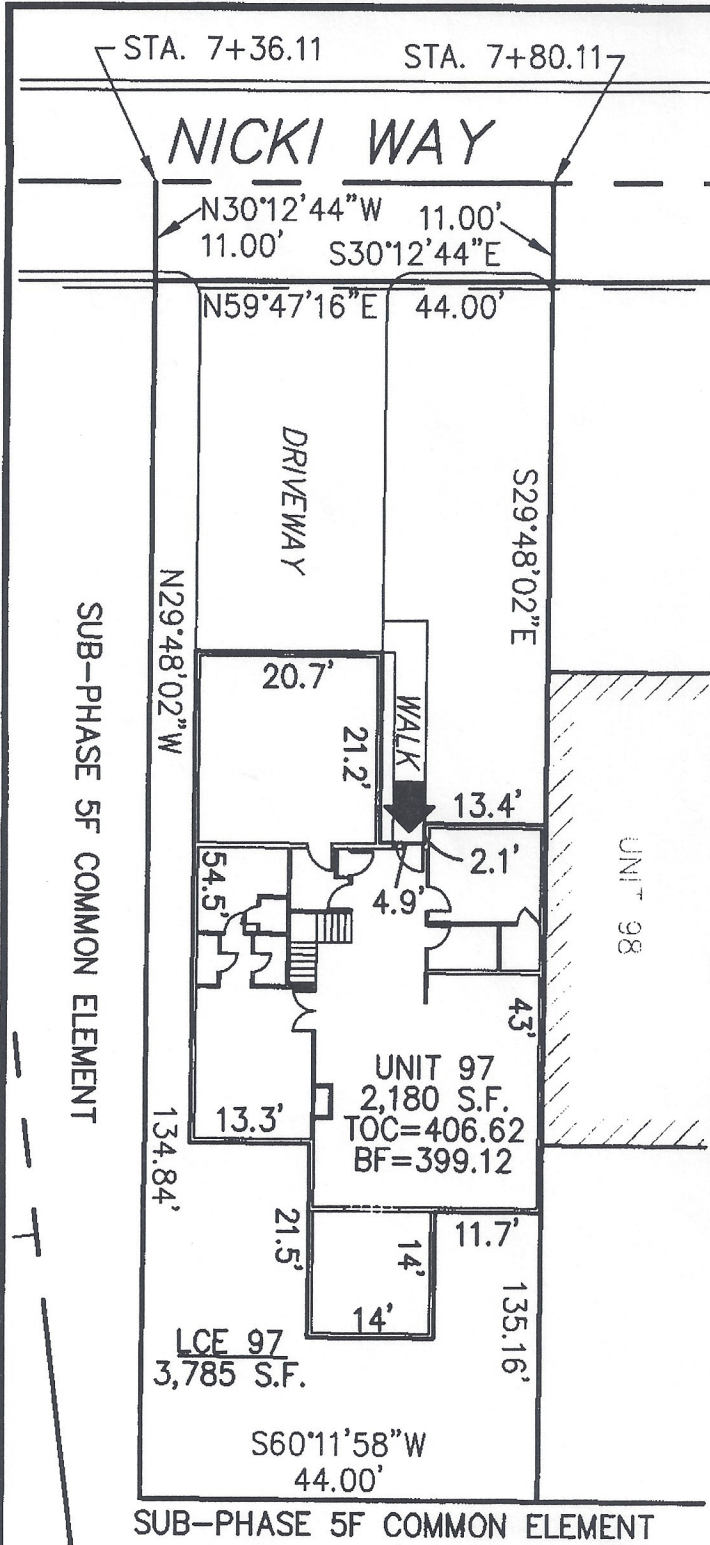


PLAN REFERENCE:
PLAN BOOK _____, PLAN _____

I CERTIFY THAT THIS PLAN SHOWS THE UNIT BEING CONVEYED AND OF IMMEDIATE ADJOINING UNITS, AND THAT IT FULLY AND ACCURATELY DEPICTS THE LAYOUT, LOCATION, DIMENSIONS, APPROXIMATE AREA, UNIT NUMBER, MAIN ENTRANCE, AND IMMEDIATE COMMON AREA TO WHICH IT HAS ACCESS, AS BUILT.



Byron J. Andrews 4/16/15



**SUMMERFIELD AT TAFT HILL CONDOMINIUM - SUB-PHASE 5F
NICKI WAY, UXBRIDGE, MA**

VILLAGE UNIT PLAN - UNIT 97 NICKI WAY

REVISIONS:	SCALE: 1"=20'	DATE: 4/14/15
	DRAWN BY: TRB	CHK'D BY: BJA
<i>37 Nicki Way</i>	JOB: 2004-439	FILE: PHASE5F.dwg

Andrews Arvey & Engineering, Inc.
Land Surveying Civil Engineering Site Planning
ASTA
P.O. Box 112, 104 Mendon Street
Uxbridge, Massachusetts 01569-0312
P: 508-278-3897 F: 508-278-2289

ATTEST: WORC. Anthony J. Vigliotti, Register