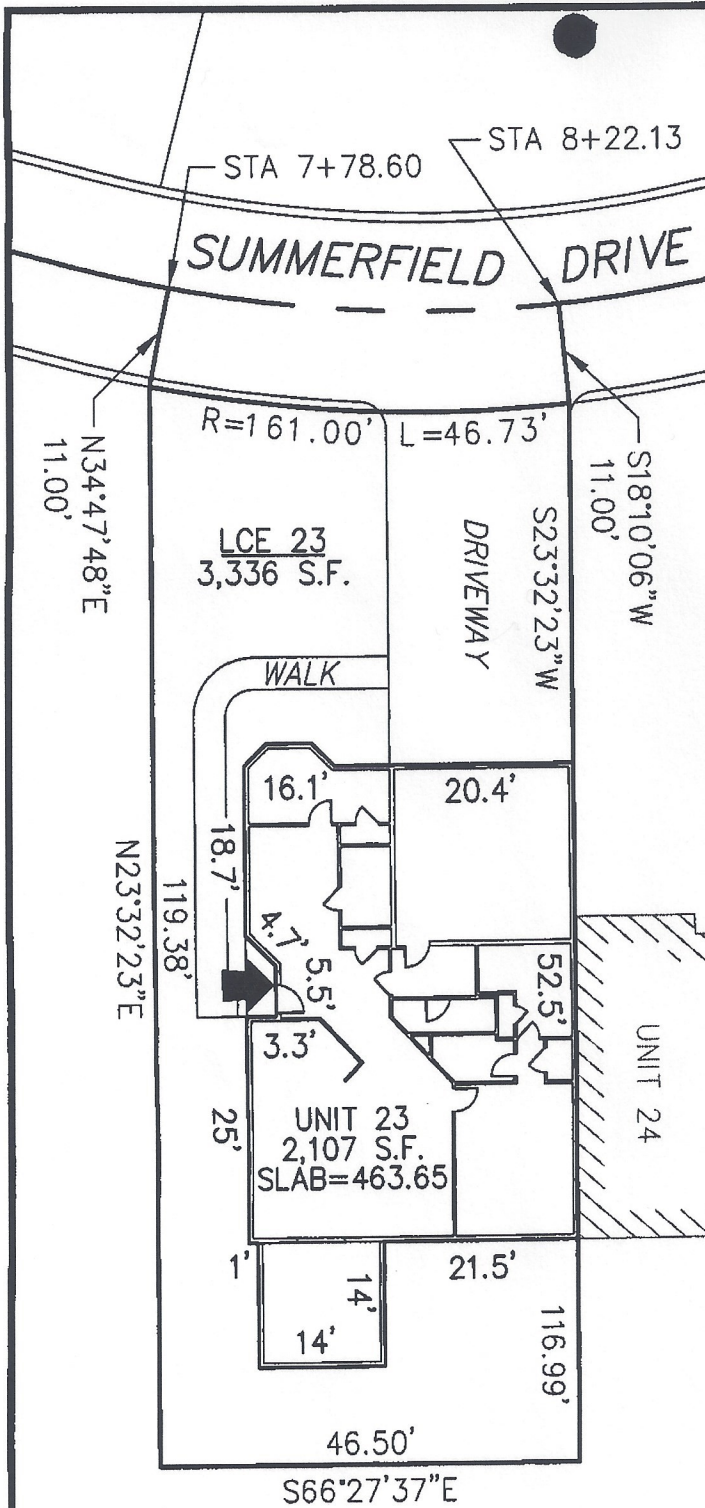


DECLARATION LEGEND

SUB-PHASE 2E

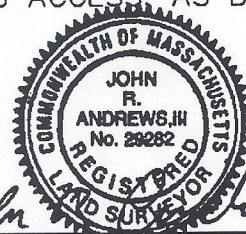
LCE 23 = 3,336 S.F.

COMMON ELEMENT = 145,642± S.F.



PLAN REFERENCE:
PLAN BOOK _____, PLAN _____

I CERTIFY THAT THIS PLAN SHOWS THE UNIT BEING CONVEYED AND OF IMMEDIATE ADJOINING UNITS, AND THAT IT FULLY AND ACCURATELY DEPICTS THE LAYOUT, LOCATION, DIMENSIONS, APPROXIMATE AREA, UNIT NUMBER, MAIN ENTRANCE, AND IMMEDIATE COMMON AREA TO WHICH IT HAS ACCESS, AS BUILT.



John R. Andrews, III 10/23/07
JOHN R. ANDREWS, III, P.L.S. DATE

**SUMMERFIELD AT TAFT HILL CONDOMINIUM - SUB-PHASE 2E
SUMMERFIELD DRIVE, UXBRIDGE, MA**

DOVER UNIT PLAN - UNIT 23 SUMMERFIELD DR.

Andrews Survey & Engineering, Inc.
Land Surveying & Civil Engineering Site Planning

REVISIONS:	SCALE: 1"=20'	DATE: 10/22/07
	DRAWN BY: TRB	CHK'D BY: JRA
<i>4.3 Summerfield</i>	JOB: 2004-439	FILE: PHASE 2E

ASE
P.O. Box 252, 100 Mendon Street
Uxbridge, Massachusetts 01569-0312
P: 508-278-3897 F: 508-278-2289

ATTEST: WORC. Anthony J. Vigliotti, Register