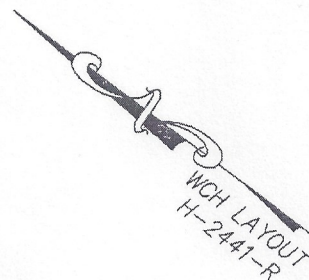


DECLARATION LEGEND

SUB-PHASE 5C

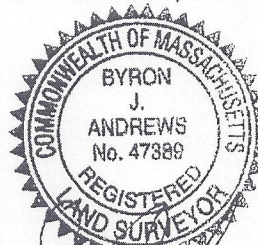
LCE 88 = 3,484 S.F.

COMMON ELEMENT = 22,165± S.F.

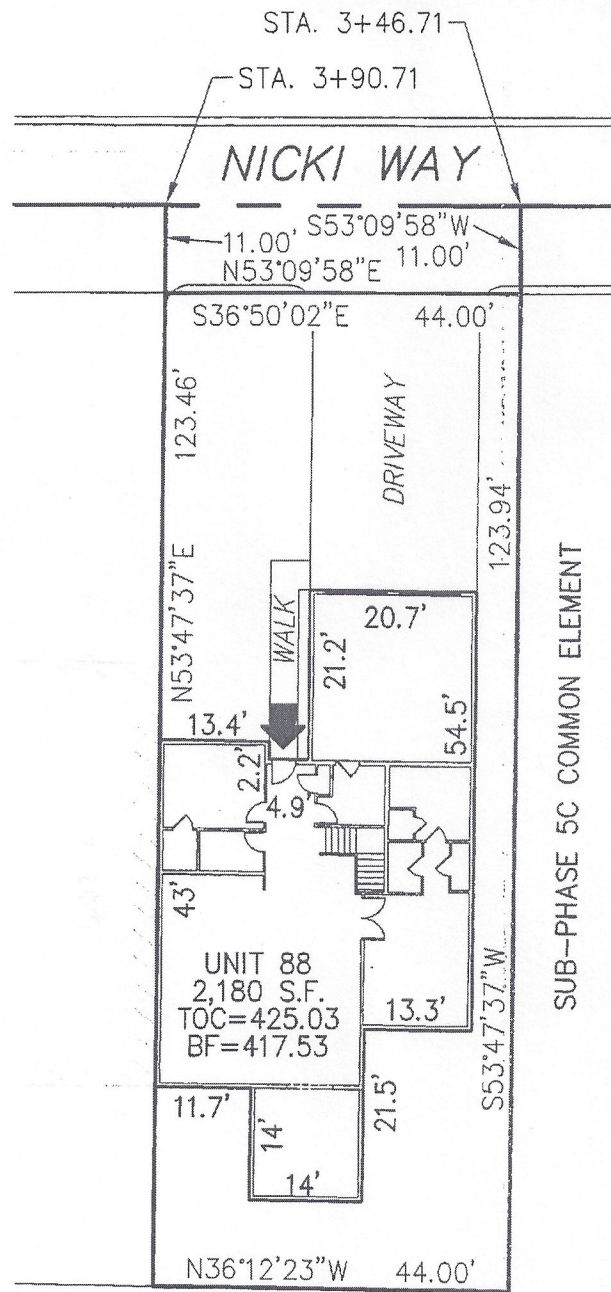


PLAN REFERENCE:
PLAN BOOK _____, PLAN _____

I CERTIFY THAT THIS PLAN SHOWS THE UNIT BEING CONVEYED AND OF IMMEDIATE ADJOINING UNITS, AND THAT IT FULLY AND ACCURATELY DEPICTS THE LAYOUT, LOCATION, DIMENSIONS, APPROXIMATE AREA, UNIT NUMBER, MAIN ENTRANCE, AND IMMEDIATE COMMON AREA TO WHICH IT HAS ACCESS, AS BUILT.



Byron J. Andrews 8/15/13



SUB-PHASE 5C
COMMON ELEMENT

SUMMERFIELD AT TAFT HILL CONDOMINIUM - SUB-PHASE 5C NICKI WAY, UXBRIDGE, MA

VILLAGE UNIT PLAN - UNIT 88 NICKI WAY

REVISIONS:	SCALE: 1"=20'	DATE: 8/14/13
	DRAWN BY: TRB	CHK'D BY: JRA
20 Nicki	JOB: 2004-439	FILE: PHASE5B_5C.dwg

Andrews Survey & Engineering, Inc.
Land Surveying - Civil Engineering - Site Planning

P.O. Box 312, 104 Mendon Street
Uxbridge, Massachusetts 01569-0312
P: 508-278-3897 F: 508-278-2289