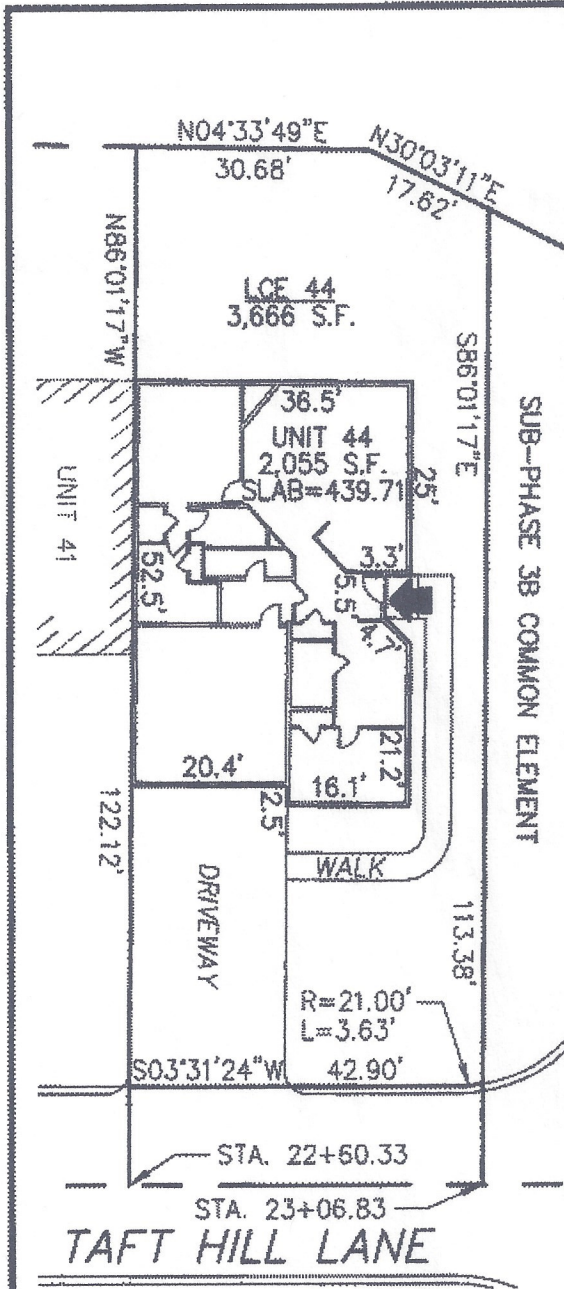


Bk: 45767 Pg: 53



DECLARATION LEGEND
SUB-PHASE 3B
 LCE 44 = 3,666 S.F.
 COMMON ELEMENT = 39,651± S.F.

WCH LAYOUT
 H-2441-R

PLAN REFERENCE:
 PLAN BOOK , PLAN

I CERTIFY THAT THIS PLAN SHOWS THE UNIT BEING CONVEYED AND OF IMMEDIATE ADJOINING UNITS, AND THAT IT FULLY AND ACCURATELY DEPICTS THE LAYOUT, LOCATION, DIMENSIONS, APPROXIMATE AREA, UNIT NUMBER, MAIN ENTRANCE, AND IMMEDIATE COMMON AREA TO WHICH IT HAS ACCESS, AS BUILT.



John R. Andrews, III 5/3/10
 JOHN R. ANDREWS, III, P.L.S. DATE

**SUMMERFIELD AT TAFT HILL CONDOMINIUM - SUB-PHASE 3B
 TAFT HILL LANE, UXBRIDGE, MA**

DOVER UNIT PLAN - UNIT 44 TAFT HILL LANE		Andrews Survey & Engineering, Inc. Land Surveying, Civil Engineering, Site Planning	
REVISIONS:	SCALE: 1"=20'	DATE: 5/3/10	 P.O. Box 222, Uxbridge, MA 01569-0222 Uxbridge, Massachusetts 01569-0312 P: 508-278-3897 F: 508-278-2289
114 THL	DRAWN BY: TRB	CHK'D BY: JRA	
	JOB: 2004-438	FILE: PHASE 3B_rev(3)	

ATTEST: WORG. Anthony J. Vigliotti, Register