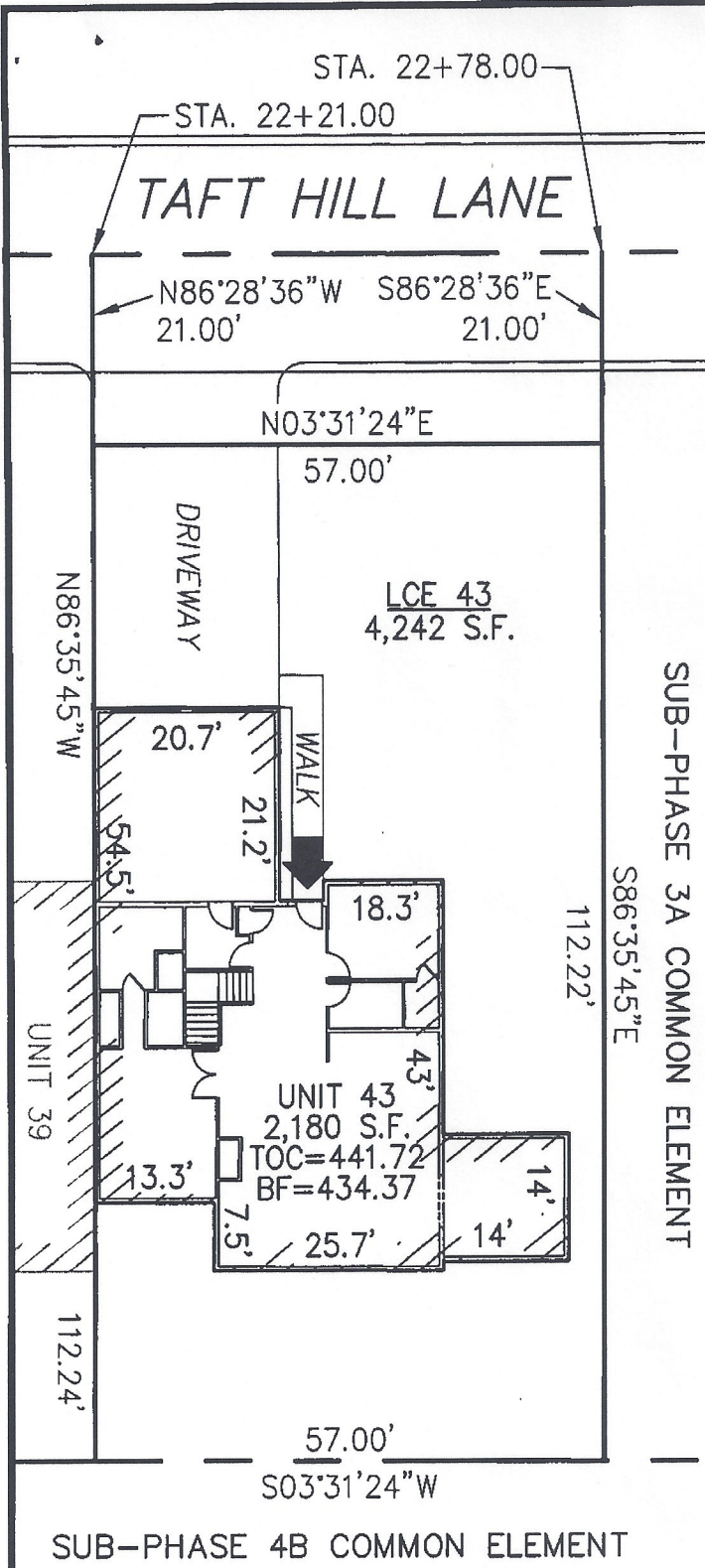


**DECLARATION LEGEND**

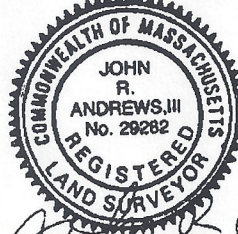
SUB-PHASE 3A  
 LCE 43 = 4,242 S.F.  
 COMMON ELEMENT = 70,231± S.F.



WCH LAYOUT  
 H-2441-R

PLAN REFERENCE:  
 PLAN BOOK 860, PLAN 103

I CERTIFY THAT THIS PLAN SHOWS THE UNIT BEING CONVEYED AND OF IMMEDIATE ADJOINING UNITS, AND THAT IT FULLY AND ACCURATELY DEPICTS THE LAYOUT, LOCATION, DIMENSIONS, APPROXIMATE AREA, UNIT NUMBER, MAIN ENTRANCE, AND IMMEDIATE COMMON AREA TO WHICH IT HAS ACCESS, AS BUILT.



*John R. Andrews, III* 7/13/07  
 JOHN R. ANDREWS, III, P.L.S. DATE

**SUMMERFIELD AT TAFT HILL CONDOMINIUM - SUB-PHASE 3A  
 TAFT HILL LANE, UXBRIDGE, MA**

<b>VILLAGE UNIT PLAN - UNIT 43 TAFT HILL LANE</b>		
REVISIONS:	SCALE: 1"=20'	DATE: 9-12-07
	DRAWN BY: TRB	CHK'D BY: JRA
<i>113 Taft Hill Lane</i>	JOB: 2004-439	FILE: PHASE3A

**Andrews Survey & Engineering, Inc.**  
 Land Surveying Civil Engineering Site Planning

**ASE**

Post Box 212, 104 Mendon Street  
 Uxbridge, Massachusetts 01569-0312  
 P: 508-278-3897 F: 508-278-2289