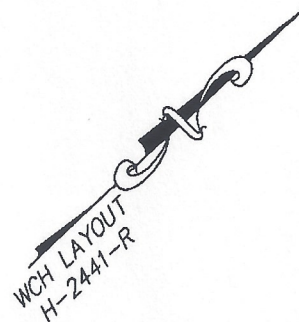


DECLARATION LEGEND

SUB-PHASE 2E

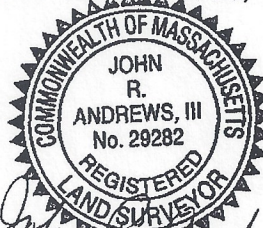
LCE 29 = 3,484 S.F.

COMMON ELEMENT = 95,104± S.F.

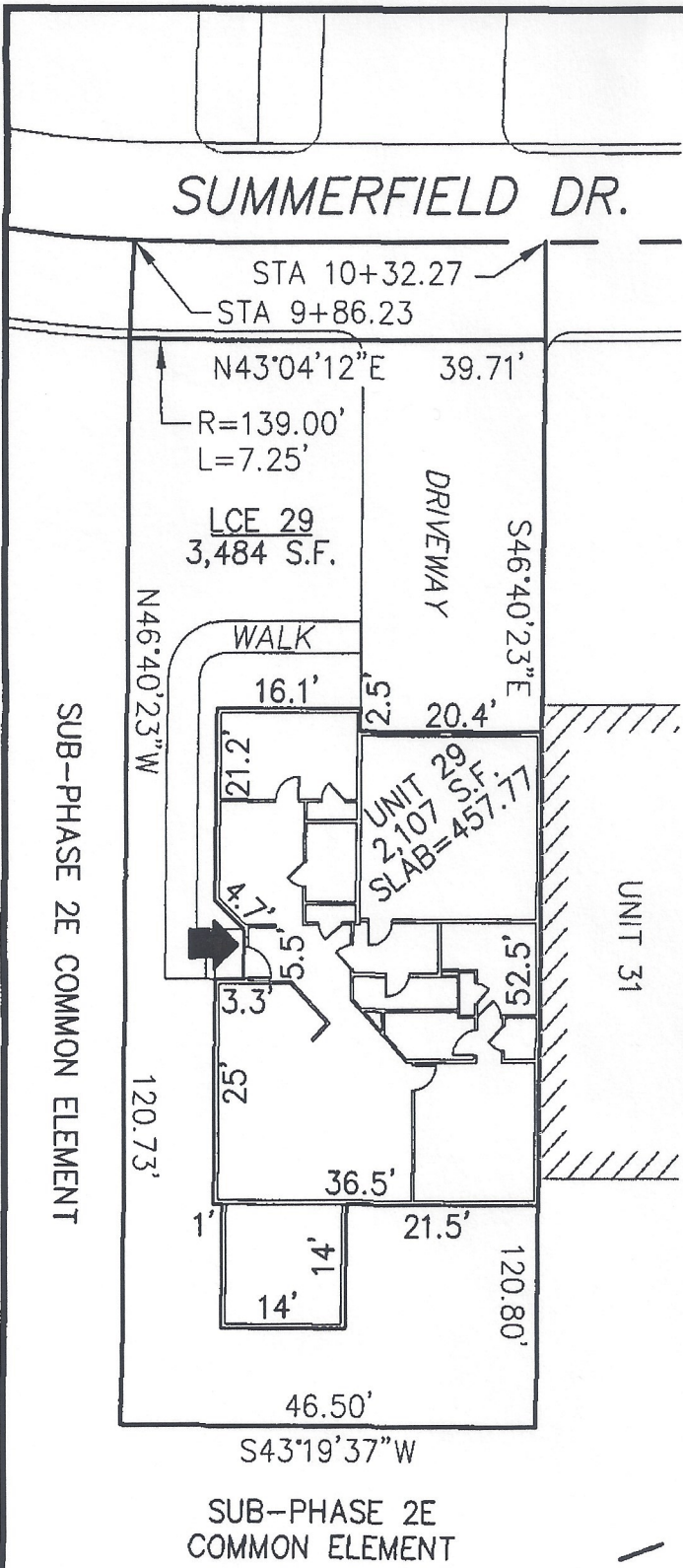


PLAN REFERENCE:
PLAN BOOK _____, PLAN _____

I CERTIFY THAT THIS PLAN SHOWS THE UNIT BEING CONVEYED AND OF IMMEDIATE ADJOINING UNITS, AND THAT IT FULLY AND ACCURATELY DEPICTS THE LAYOUT, LOCATION, DIMENSIONS, APPROXIMATE AREA, UNIT NUMBER, MAIN ENTRANCE, AND IMMEDIATE COMMON AREA TO WHICH IT HAS ACCESS, AS BUILT.



John R. Andrews, III 3-4-10
JOHN R. ANDREWS, III, P.L.S. DATE



**SUMMERFIELD AT TAFT HILL CONDOMINIUM - SUB-PHASE 2E
SUMMERFIELD DRIVE, UXBRIDGE, MA**

DOVER UNIT PLAN - UNIT 29 SUMMERFIELD DR.

REVISIONS:	SCALE: 1"=20'	DATE: 3/4/10
	DRAWN BY: TRB	CHK'D BY: JRA
<i>53 Summerfield</i>	JOB: 2004-439	FILE: PHASE 2E_rev(7)

Andrews Survey & Engineering, Inc.
Land Surveying Civil Engineering Site Planning
MSI
P.O. Box 312, 104 Mendon Street
Uxbridge, Massachusetts 01569-0312
P: 508-278-3897 F: 508-278-2289

ATTEST: WORC. Anthony J. Violinetti Registrar