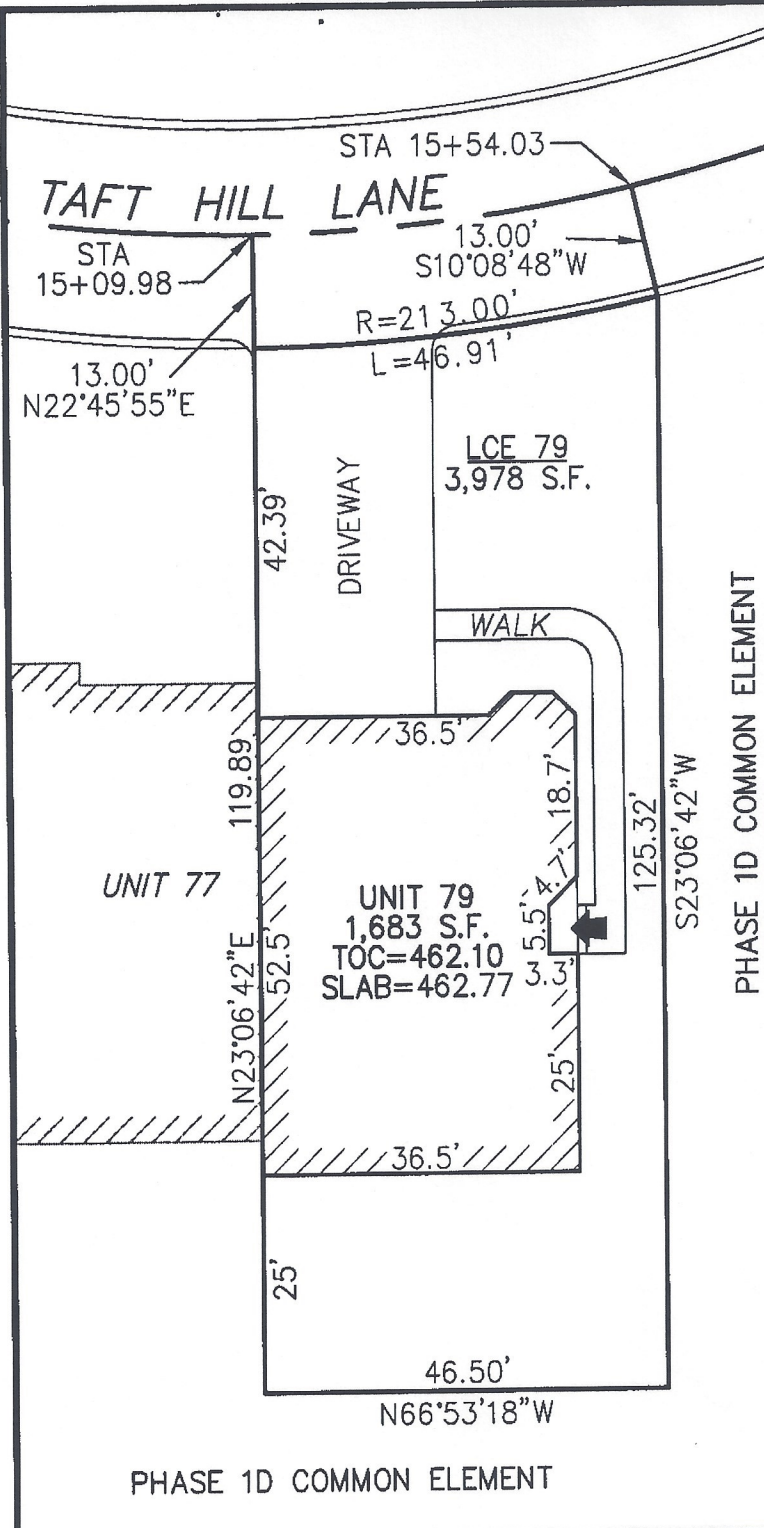
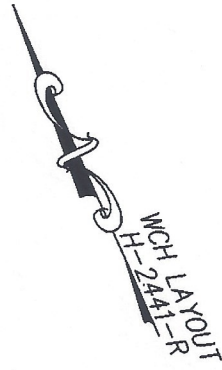


**DECLARATION LEGEND**

**PHASE 1D**

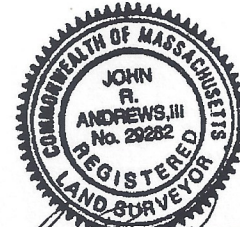
LCE 79 = 3,978 S.F.  
COMMON ELEMENT = 39,770± S.F.



PHASE 1D COMMON ELEMENT

PLAN REFERENCE:  
PLAN BOOK \_\_\_\_\_, PLAN \_\_\_\_\_

I CERTIFY THAT THIS PLAN SHOWS THE UNIT BEING CONVEYED AND OF IMMEDIATE ADJOINING UNITS, AND THAT IT FULLY AND ACCURATELY DEPICTS THE LAYOUT, LOCATION, DIMENSIONS, APPROXIMATE AREA, UNIT NUMBER, MAIN ENTRANCE, AND IMMEDIATE COMMON AREA TO WHICH IT HAS ACCESS, AS BUILT.



*John R. Andrews, III* 2/6/06  
JOHN R. ANDREWS, III, P.L.S. DATE:

**SUMMERFIELD AT TAFT HILL CONDOMINIUM - PHASE 1D  
TAFT HILL LANE, UXBRIDGE, MA**

**DOVER UNIT PLAN - 79 TAFT HILL LANE**

Andrews Survey & Engineering, Inc.  
Land Surveying, Civil Engineering, Site Planning

**ASE**  
P.O. Box 112, 104 Mendon Street  
Uxbridge, Massachusetts 01569-0312  
P: 508-278-3897 F: 508-278-2289

REVISIONS:	SCALE: 1"=20'	DATE: 2-3-06
	DRAWN BY: SJO	CHK'D BY: JRA
79 Taft Hill Lane	JOB: 2004-439	FILE: phase1D

**ATTEST: WORC. Anthony J. Vigliotti, Register**