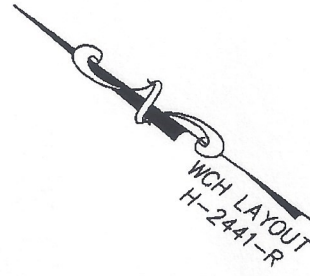
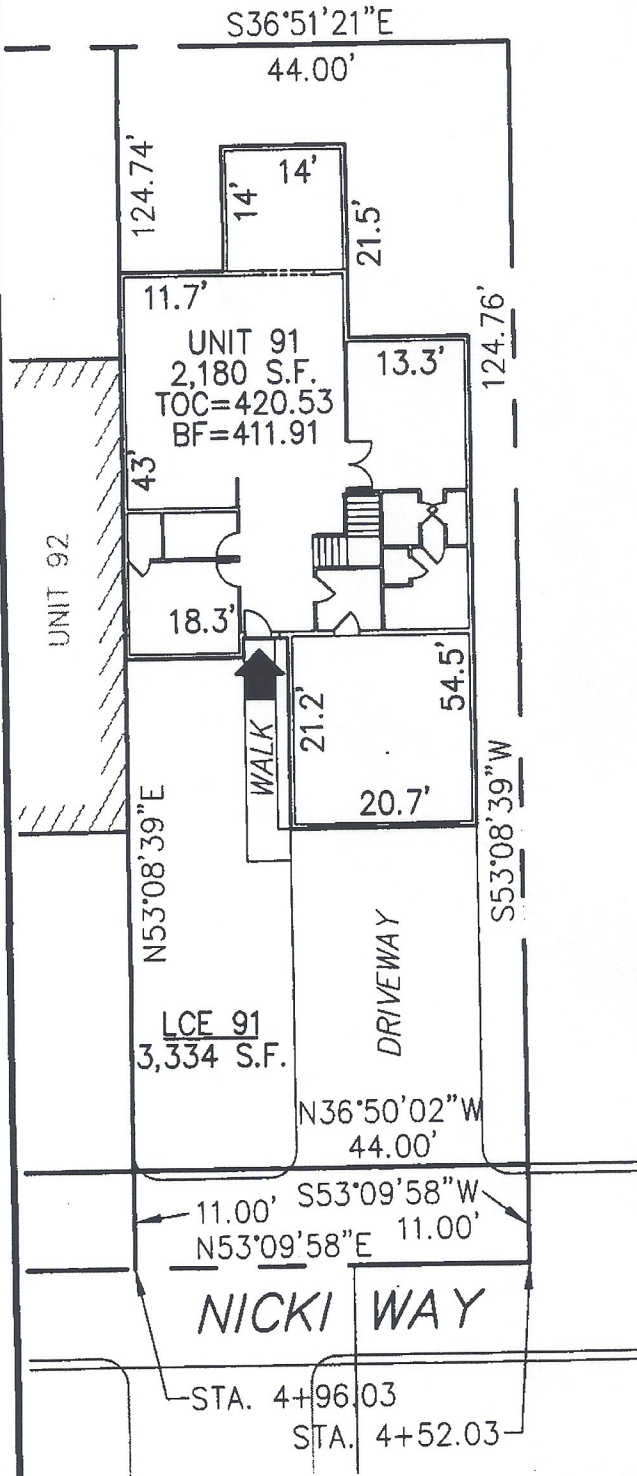


**DECLARATION LEGEND**

**SUB-PHASE 5B**

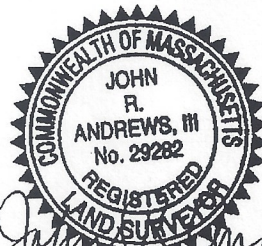
LCE 91 = 3,334 S.F.

COMMON ELEMENT = 8,194± S.F.



PLAN REFERENCE:  
PLAN BOOK , PLAN

I CERTIFY THAT THIS PLAN SHOWS THE UNIT BEING CONVEYED AND OF IMMEDIATE ADJOINING UNITS, AND THAT IT FULLY AND ACCURATELY DEPICTS THE LAYOUT, LOCATION, DIMENSIONS, APPROXIMATE AREA, UNIT NUMBER, MAIN ENTRANCE, AND IMMEDIATE COMMON AREA TO WHICH IT HAS ACCESS, AS BUILT.



*John R. Andrews III*

**SUMMERFIELD AT TAFT HILL CONDOMINIUM - SUB-PHASE 5B  
NICKI WAY, UXBRIDGE, MA**

**VILLAGE UNIT PLAN - UNIT 91 NICKI WAY**

**Andrews Survey & Engineering, Inc.**  
Land Surveying, Civil Engineering, Site Planning

**ASPE**  
P.O. Box 112, 104 Mendon Street  
Uxbridge, Massachusetts 01569-0312  
P: 508-278-3897 F: 508-278-2289

REVISIONS:	SCALE: 1"=20'	DATE: 5/22/12
	DRAWN BY: TRB	CHK'D BY: JRA
<b>23 Nicki Way</b>	JOB: 2004-439	FILE: PHASE5B.dwg

ATTEST: WORC. Anthony J. Vigliotti, Register