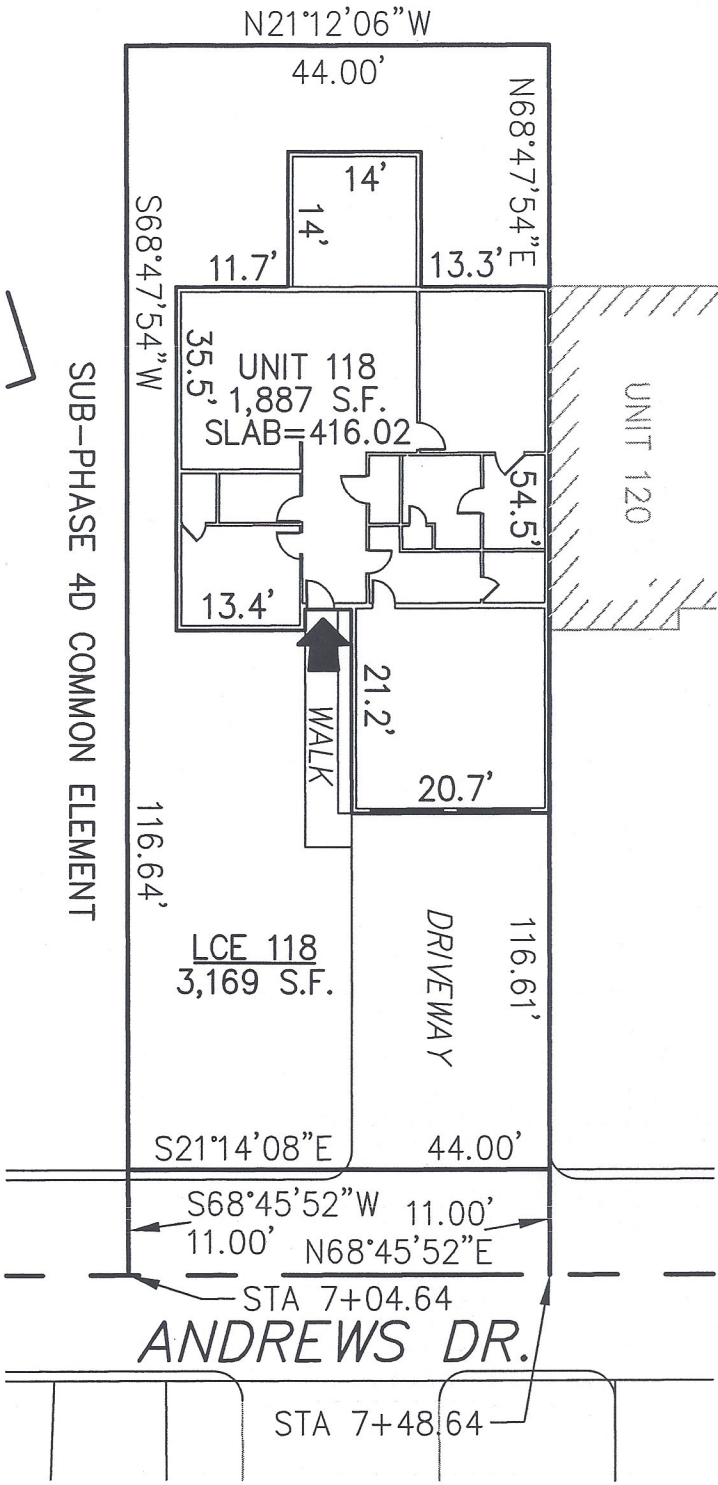


DECLARATION LEGEND

SUB-PHASE 4D

LCE 118 = 3,169 S.F.

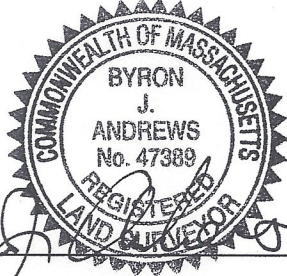
COMMON ELEMENT = 70,064± S.F.



WCH LAYOUT
H-2441-R

PLAN REFERENCE:
PLAN BOOK , PLAN

I CERTIFY THAT THIS PLAN SHOWS THE UNIT BEING CONVEYED AND OF IMMEDIATE ADJOINING UNITS, AND THAT IT FULLY AND ACCURATELY DEPICTS THE LAYOUT, LOCATION, DIMENSIONS, APPROXIMATE AREA, UNIT NUMBER, MAIN ENTRANCE, AND IMMEDIATE COMMON AREA TO WHICH IT HAS ACCESS, AS BUILT.



Byron J. Andrews 1/31/12

**SUMMERFIELD AT TAFT HILL CONDOMINIUM - SUB-PHASE 4D
ANDREWS DRIVE, UXBRIDGE, MA**

COTTAGE UNIT PLAN - UNIT 118 ANDREWS DRIVE

REVISIONS:	SCALE: 1"=20'	DATE: 1/30/12
	DRAWN BY: TRB	CHK'D BY: JRA
38 Andrews	JOB: 2004-439	FILE: PHASE4D

Andrews Survey & Engineering, Inc.
Land Surveying - Civil Engineering - Site Planning
ASTA
P.O. Box 312, 104 Mendon Street
Uxbridge, Massachusetts 01569-0312
P: 508-278-3897 F: 508-278-2289