

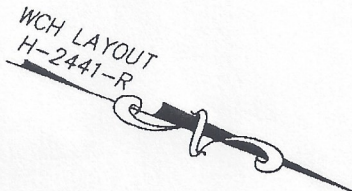
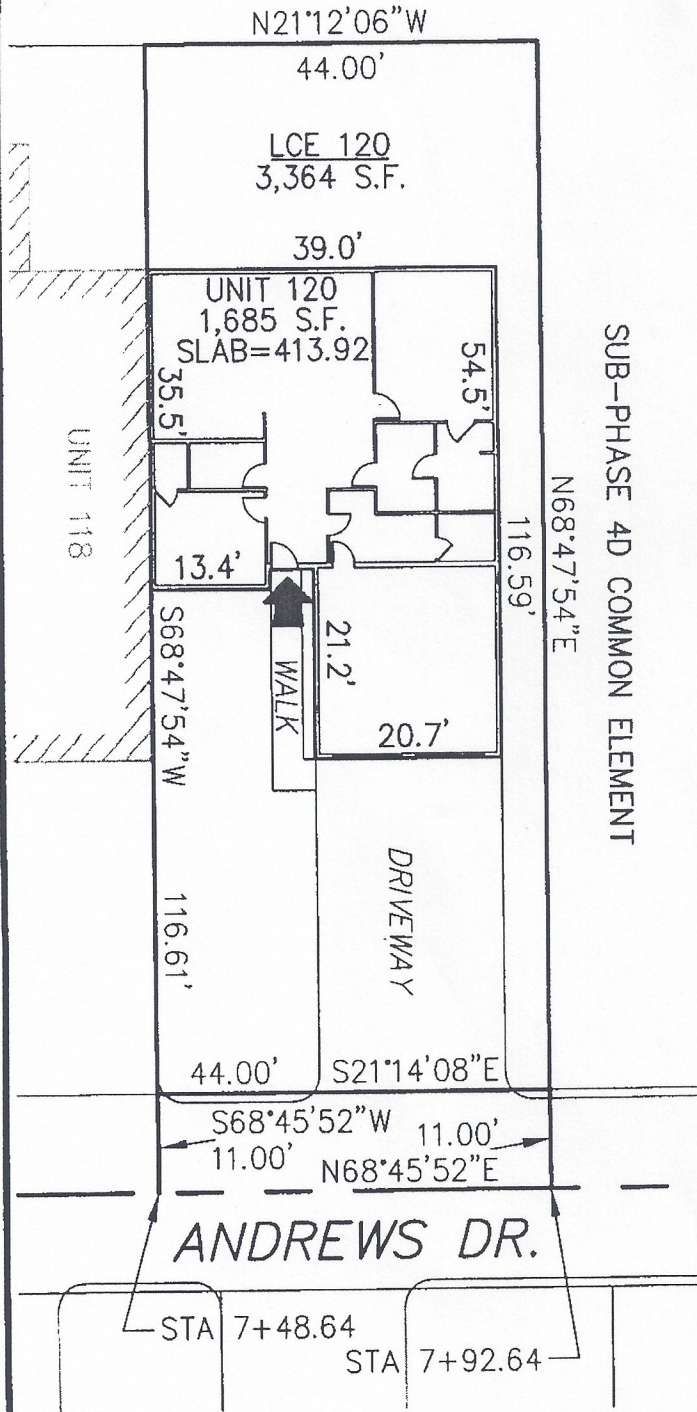
SUB-PHASE 4D
COMMON ELEMENT

DECLARATION LEGEND

SUB-PHASE 4D

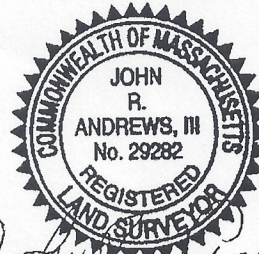
LCE 120 = 3,364 S.F.

COMMON ELEMENT = 70,934± S.F.



PLAN REFERENCE:
PLAN BOOK , PLAN

I CERTIFY THAT THIS PLAN SHOWS THE UNIT BEING CONVEYED AND OF IMMEDIATE ADJOINING UNITS, AND THAT IT FULLY AND ACCURATELY DEPICTS THE LAYOUT, LOCATION, DIMENSIONS, APPROXIMATE AREA, UNIT NUMBER, MAIN ENTRANCE, AND IMMEDIATE COMMON AREA TO WHICH IT HAS ACCESS, AS BUILT.



John R. Andrews, III

SUMMERFIELD AT TAFT HILL CONDOMINIUM - SUB-PHASE 4D
ANDREWS DRIVE, UXBRIDGE, MA

COTTAGE UNIT PLAN - UNIT 120 ANDREWS DRIVE

Andrews Survey & Engineering, Inc.
Land Surveying Civil Engineering Site Planning

104 Mendon Street
Uxbridge, Massachusetts 01569-0312
P: 508-278-3897 F: 508-278-2289

REVISIONS:	SCALE: 1"=20'	DATE: 5/9/12
	DRAWN BY: TRB	CHK'D BY: JRA
40 Andrews	JOB: 2004-439	FILE: PHASE4D_REV