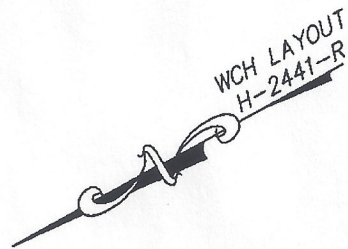


**DECLARATION LEGEND**

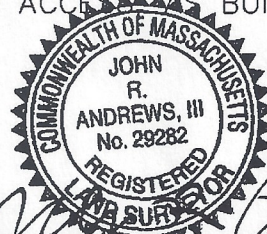
**SUB-PHASE 2D**

LCE 2 = 3,305 S.F.  
COMMON ELEMENT = 54,863± S.F.

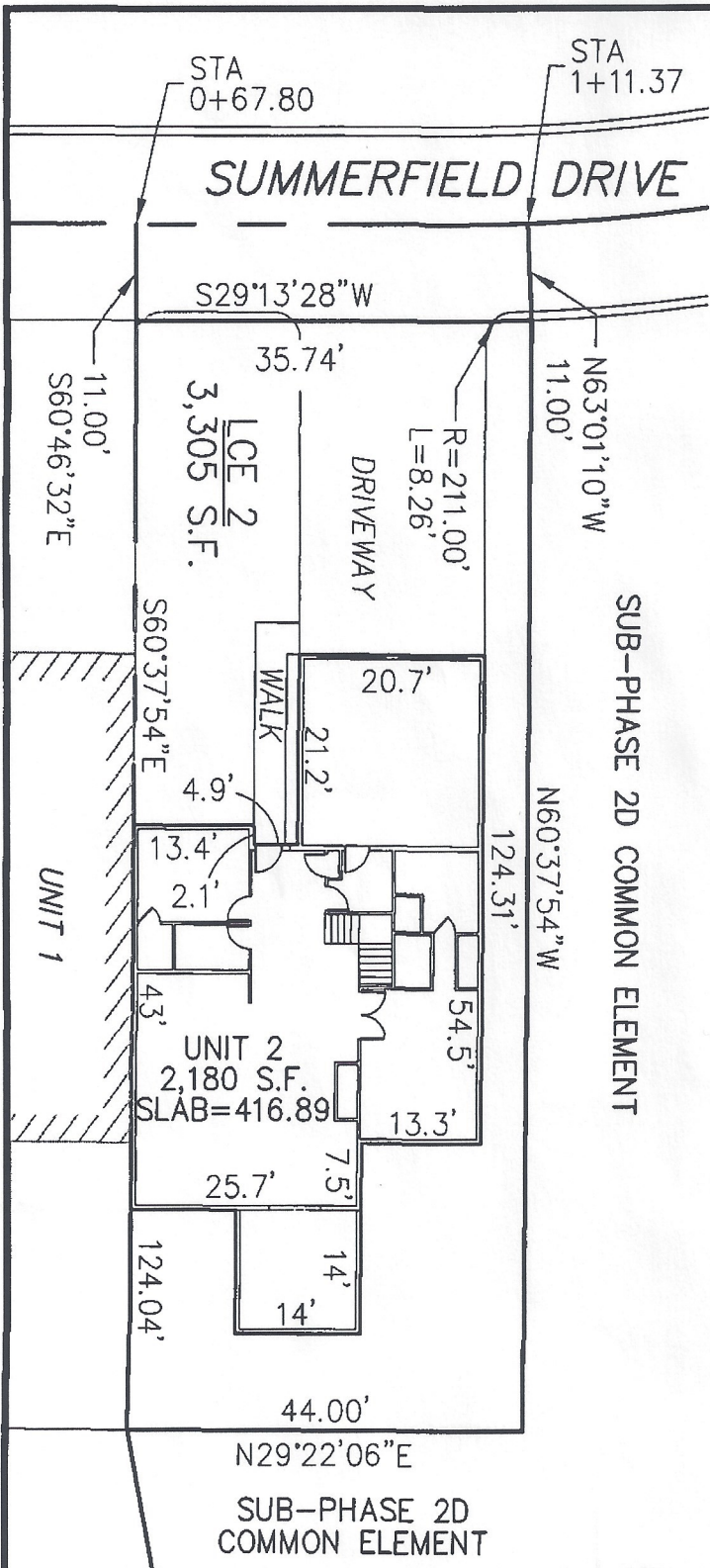


PLAN REFERENCE:  
PLAN BOOK \_\_\_\_\_, PLAN \_\_\_\_\_

I CERTIFY THAT THIS PLAN SHOWS THE UNIT BEING CONVEYED AND OF IMMEDIATE ADJOINING UNITS, AND THAT IT FULLY AND ACCURATELY DEPICTS THE LAYOUT, LOCATION, DIMENSIONS, APPROXIMATE AREA, UNIT NUMBER, MAIN ENTRANCE, AND IMMEDIATE COMMON AREA TO WHICH IT HAS ACCESS AS BUILT.



JOHN R. ANDREWS, III, P.L.S. *Andrews 6/8/09* DATE



**SUMMERFIELD AT TAFT HILL CONDOMINIUM - SUB-PHASE 2D  
SUMMERFIELD DRIVE, UXBRIDGE, MA**

**VILLAGE UNIT PLAN - UNIT 2 SUMMERFIELD DR.**

REVISIONS:	SCALE: 1"=20'	DATE: 6/4/09
	DRAWN BY: TRB	CHK'D BY: JRA
<i>7 Summerfield</i>	JOB: 2004-439	FILE: phase2D_revised(4)

**Andrews Survey & Engineering, Inc.**  
Land Surveying Civil Engineering Site Planning  
**ASSE**  
P.O. Box 212, 104 Mendon Street  
Uxbridge, Massachusetts 01569-0312  
P: 508-278-3897 F: 508-278-2289