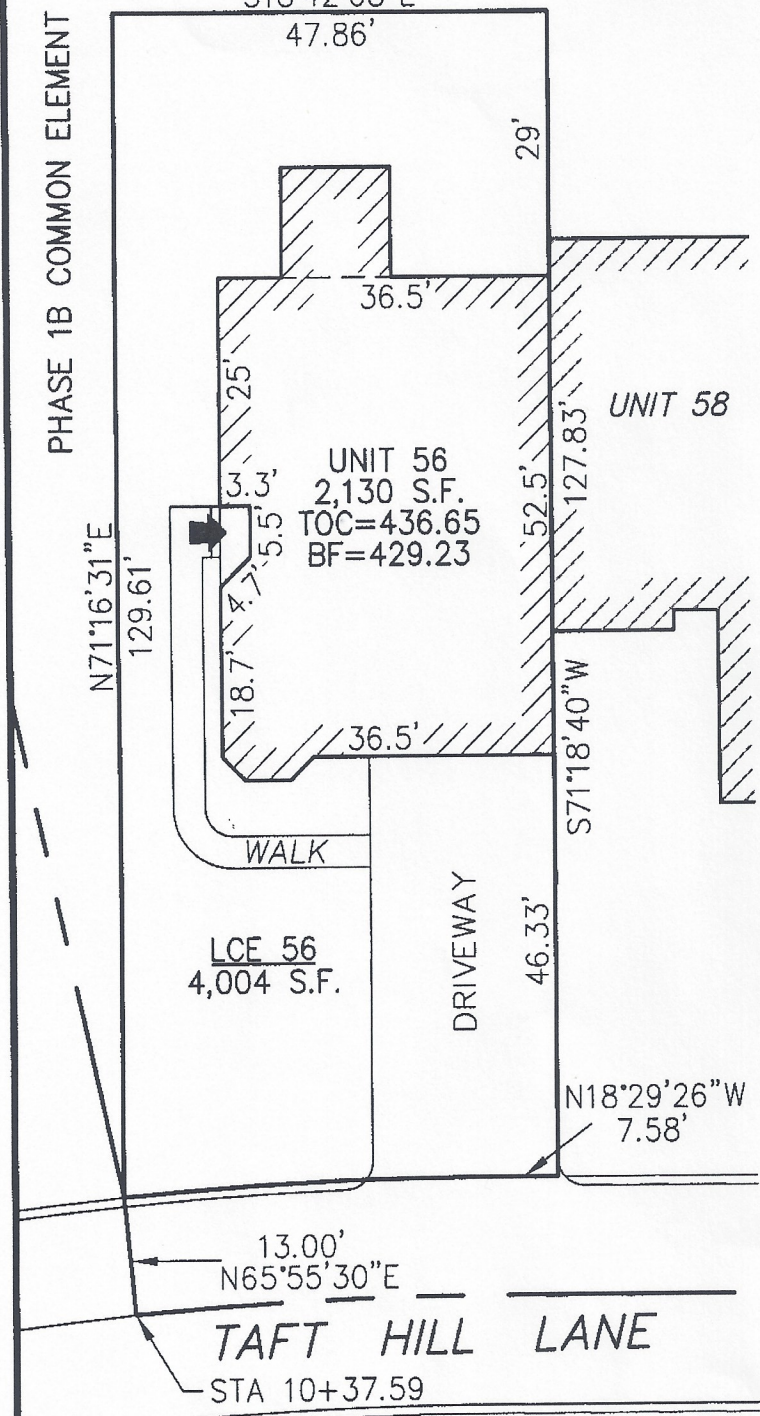


PHASE 1B COMMON ELEMENT

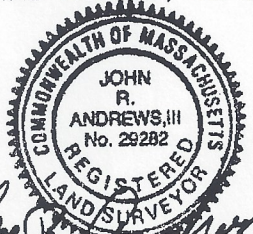
**DECLARATION LEGEND**

**PHASE 1B**  
 LCE 56 = 4,004 S.F.  
 COMMON ELEMENT = 60,682± S.F.



PLAN REFERENCE:  
 PLAN BOOK \_\_\_\_\_, PLAN \_\_\_\_\_

I CERTIFY THAT THIS PLAN SHOWS THE UNIT BEING CONVEYED AND OF IMMEDIATE ADJOINING UNITS, AND THAT IT FULLY AND ACCURATELY DEPICTS THE LAYOUT, LOCATION, DIMENSIONS, APPROXIMATE AREA, UNIT NUMBER, MAIN ENTRANCE, AND IMMEDIATE COMMON AREA TO WHICH IT HAS ACCESS, AS BUILT.



*John R. Andrews, III* 11/25/05  
 JOHN R. ANDREWS, III, P.L.S. DATE

SUMMERFIELD AT TAFT HILL CONDOMINIUM - PHASE 1B  
 TAFT HILL LANE, UXBRIDGE, MA

DOVER UNIT PLAN - 56 TAFT HILL LANE		
REVISIONS:	SCALE: 1'=20'	DATE: 11-21-05
	DRAWN BY: SJO	CHK'D BY: JRA
56 Taft Hill Lane	JOB: 2004-439	FILE: phase1B

Andrews Survey & Engineering, Inc.  
 Land Surveying, Civil Engineering, Site Planning

**ASE**

P.O. Box 22, 204 Mendon Street  
 Uxbridge, Massachusetts 01569-0312  
 P: 508-278-3897 F: 508-278-2289

ATTEST: WORC. Anthony J. Vigliotti, Register