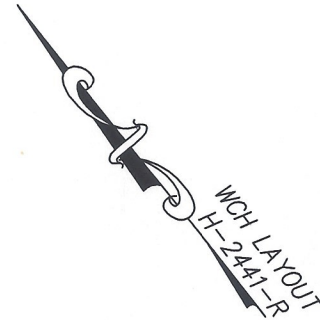


DECLARATION LEGEND

SUB-PHASE 2E

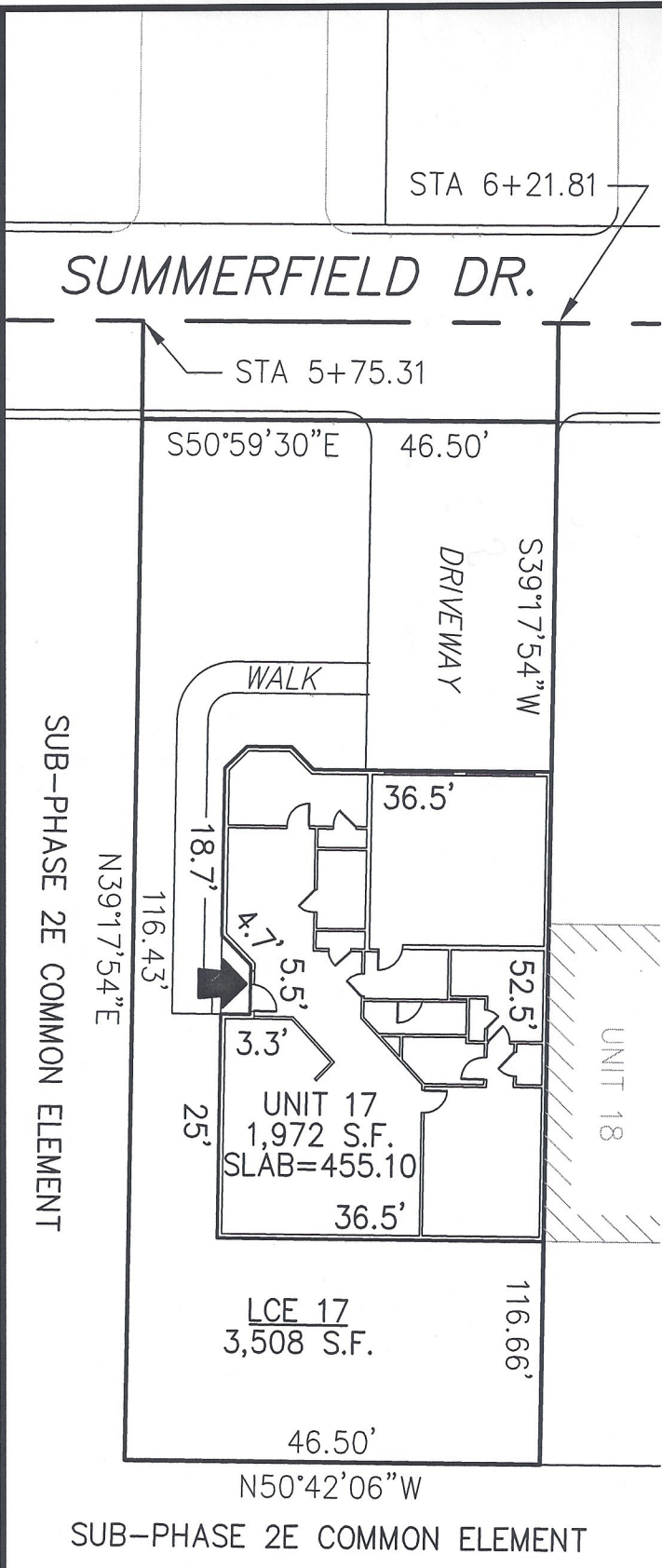
LCE 17 = 3,508 S.F.

COMMON ELEMENT = 95,104± S.F.



PLAN REFERENCE:
PLAN BOOK _____, PLAN _____

I CERTIFY THAT THIS PLAN SHOWS THE UNIT BEING CONVEYED AND OF IMMEDIATE ADJOINING UNITS, AND THAT IT FULLY AND ACCURATELY DEPICTS THE LAYOUT, LOCATION, DIMENSIONS, APPROXIMATE AREA, UNIT NUMBER, MAIN ENTRANCE, AND IMMEDIATE COMMON AREA TO WHICH IT HAS ACCESS, AS BUILT.



JOHN R. ANDREWS, III, P.L.S. _____ DATE _____

SUMMERFIELD AT TAFT HILL CONDOMINIUM - SUB-PHASE 2E SUMMERFIELD DRIVE, UXBRIDGE, MA

DOVER UNIT PLAN - UNIT 17 SUMMERFIELD DR.

Andrews Survey & Engineering, Inc.
Land Surveying - Civil Engineering - Site Planning

REVISIONS:

SCALE: 1"=20'

DATE: 3/4/10

DRAWN BY: TRB

CHK'D BY: JRA

33 Summerfield

JOB: 2004-439

FILE: PHASE 2E_rev(7)

P.O. Box 312, 104 Mendon Street
Uxbridge, Massachusetts 01569-0312
P: 508-278-3897 F: 508-278-2289