

SUB-PHASE 2C
COMMON ELEMENT

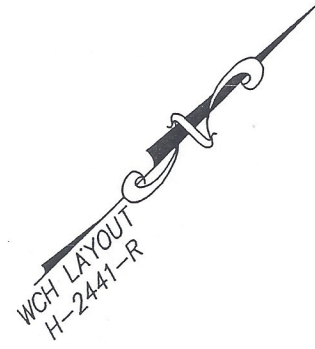
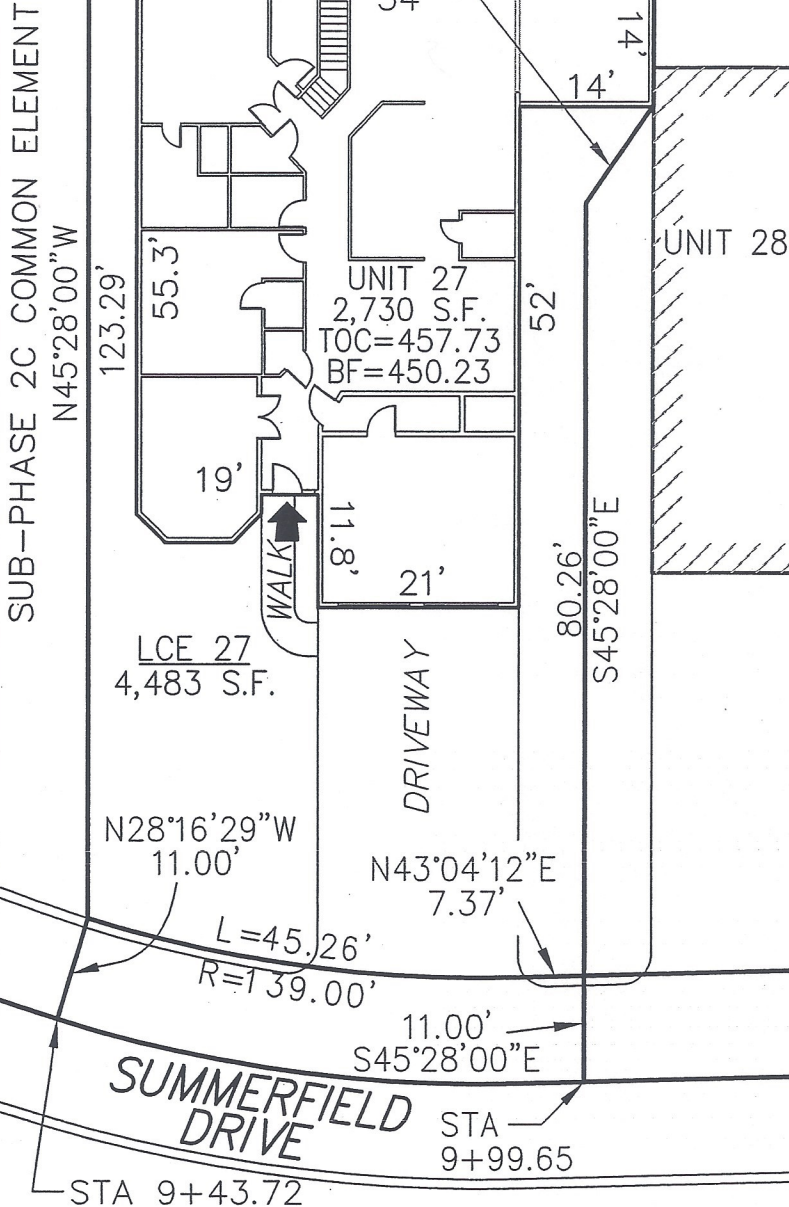
SUB-PHASE 1E
COMMON ELEMENT

DECLARATION LEGEND

SUB-PHASE 2C

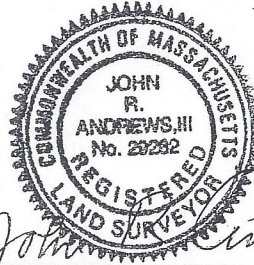
LCE 27 = 4,483 S.F.

COMMON ELEMENT = 65,106± S.F.



PLAN REFERENCE:
PLAN BOOK , PLAN

I CERTIFY THAT THIS PLAN SHOWS THE UNIT BEING CONVEYED AND OF IMMEDIATE ADJOINING UNITS, AND THAT IT FULLY AND ACCURATELY DEPICTS THE LAYOUT, LOCATION, DIMENSIONS, APPROXIMATE AREA, UNIT NUMBER, MAIN ENTRANCE, AND IMMEDIATE COMMON AREA TO WHICH IT HAS ACCESS, AS BUILT.



John R. Andrews, III
JOHN R. ANDREWS, III, P.L.S. 8/23/06
DATE

**SUMMERFIELD AT TAFT HILL CONDOMINIUM - SUB-PHASE 2C
SUMMERFIELD DRIVE, UXBRIDGE, MA**

FAIRWAY UNIT PLAN - UNIT 27 SUMMERFIELD DR.

Andrews Survey & Engineering, Inc.
Land Surveying Civil Engineering Site Planning
AS&E
P.O. Box 312, 104 Mendon Street
Uxbridge, Massachusetts 01569-0312
P: 508-278-3897 F: 508-278-2289

REVISIONS:	SCALE: 1'=20'	DATE: 8-18-06
	DRAWN BY: TRB	CHK'D BY: AF
50 Summerfield	JOB: 2004-439	FILE: phase2C