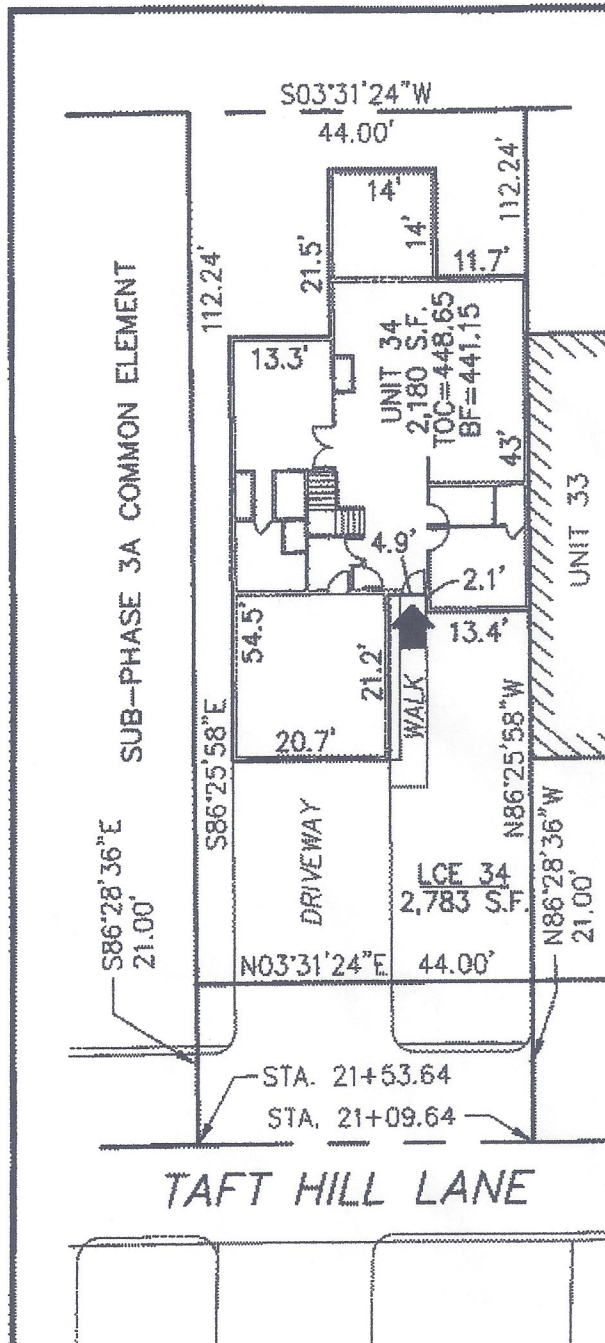


Sk: 47293 Pg: 400



DECLARATION LEGEND
SUB-PHASE 3A
 LCE 34 = 2,783 S.F.
 COMMON ELEMENT = 48,364± S.F.

WCH LAYOUT
 H-2441-R

PLAN REFERENCE:
 PLAN BOOK 888, PLAN 16

I CERTIFY THAT THIS PLAN SHOWS THE UNIT BEING CONVEYED AND OF IMMEDIATE ADJOINING UNITS, AND THAT IT FULLY AND ACCURATELY DEPICTS THE LAYOUT, LOCATION, DIMENSIONS, APPROXIMATE AREA, UNIT NUMBER, MAIN ENTRANCE, AND IMMEDIATE COMMON AREA TO WHICH IT HAS ACCESS, AS BUILT.



John R. Andrews III
 JOHN R. ANDREWS, III, P.L.S. DATE 4/11/11

**SUMMERFIELD AT TAFT HILL CONDOMINIUM - SUB-PHASE 3A
 TAFT HILL LANE, UXBRIDGE, MA**

VILLAGE UNIT PLAN - UNIT 34 TAFT HILL LANE			Andrews Survey & Engineering, Inc. Land Surveying, Civil Engineering, Site Planning		
REVISIONS:	SCALE: 1"=20'	DATE: 3-28-11	P.O. Box 312, 104 Mendon Street Uxbridge, Massachusetts 01569-0312 P: 508-278-3897 fax: 508-278-2289		
107 THL	DRAWN BY: TRB	CHK'D BY: JRA			
	JOB: 2004-439	FILE: phase3A_revised(3)			

ATTEST: WORD: Anthony J. Vigilotti, Registrar