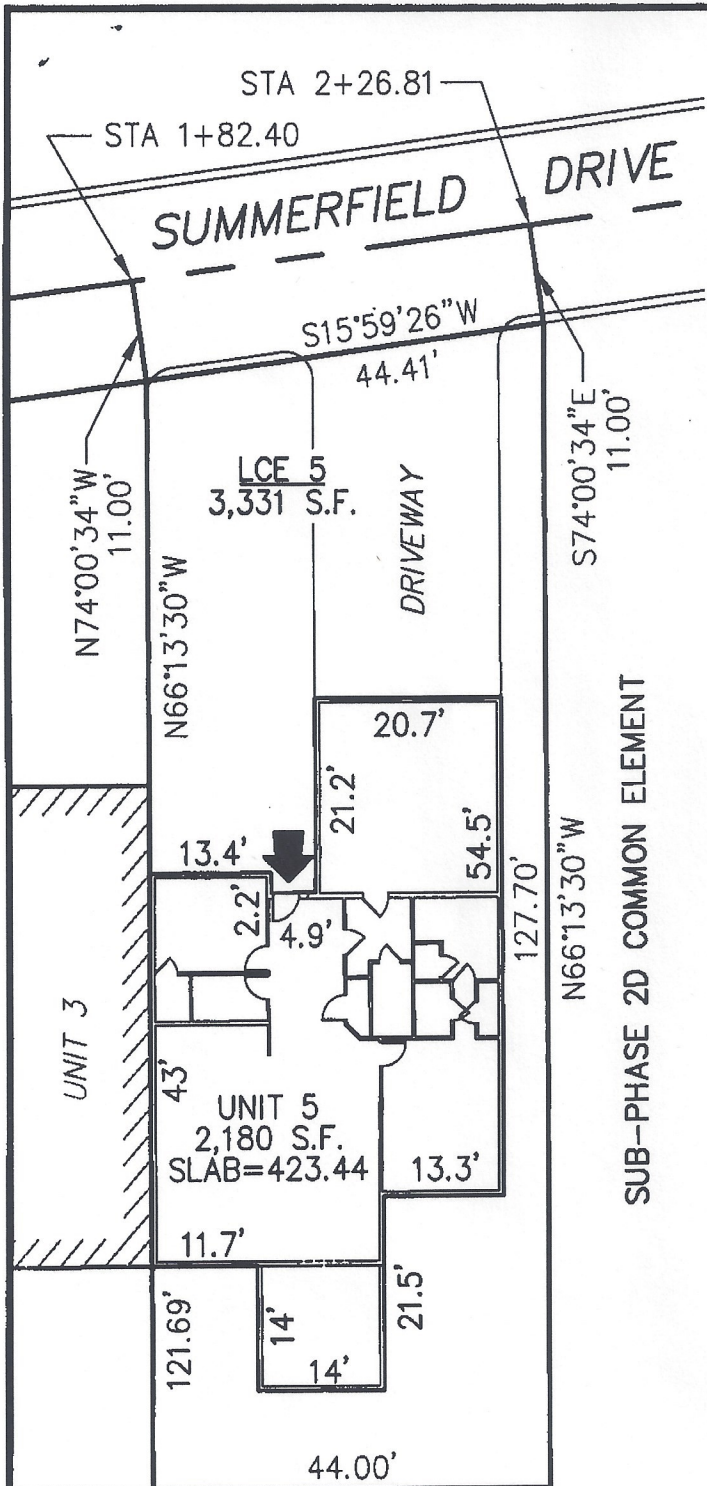


DECLARATION LEGEND

SUB-PHASE 2D

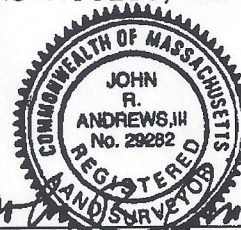
LCE 5 = 3,331 S.F.
COMMON ELEMENT = 73,009± S.F.

WCH LAYOUT
H-2441-R



PLAN REFERENCE:
PLAN BOOK , PLAN

I CERTIFY THAT THIS PLAN SHOWS THE UNIT BEING CONVEYED AND OF IMMEDIATE ADJOINING UNITS, AND THAT IT FULLY AND ACCURATELY DEPICTS THE LAYOUT, LOCATION, DIMENSIONS, APPROXIMATE AREA, UNIT NUMBER, MAIN ENTRANCE, AND IMMEDIATE COMMON AREA TO WHICH IT HAS ACCESS, AS BUILT.



John R. Andrews, III 10/23/07
JOHN R. ANDREWS, III, P.L.S. DATE

SUB-PHASE 2D COMMON ELEMENT

**SUMMERFIELD AT TAFT HILL CONDOMINIUM - SUB-PHASE 2D
SUMMERFIELD DRIVE, UXBRIDGE, MA**

VILLAGE UNIT PLAN - UNIT 5 SUMMERFIELD DR.

Andrews Survey & Engineering, Inc.
Land Surveying, Civil Engineering, Site Planning

ASE
P.O. Box 212, 104 Mendon Street
Uxbridge, Massachusetts 01569-0312
P: 508-278-1897 F: 508-278-2289

REVISIONS:	SCALE: 1"=20'	DATE: 10/22/07
	DRAWN BY: TRB	CHK'D BY: JRA
13 Summerfield	JOB: 2004-439	FILE: phase2D_revised(2)

ATTEST: WORC. Anthony J. Vigiotti, Register